


RESEARCH ARTICLE

Open Access



Differences in immune responses to *Haemonchus contortus* infection in the susceptible Ile de France and the resistant Santa Ines sheep under different anthelmintic treatments regimens

Ana Cláudia A. Albuquerque^{1*} , Cesar Cristiano Bassetto², Fabiana A. Almeida², Katie A. Hildersley^{3,4}, Tom N. McNeilly⁴, Collette Britton³ and Alessandro F. T. Amarante²

Abstract

Understanding the immunological basis of resistance to gastrointestinal nematode infections in livestock is important in order to develop novel methods of parasite control such as vaccination or genetic selection for parasite resistance. The present study aimed to investigate differences in immune response between parasite resistant Santa Ines and susceptible Ile de France sheep breeds to natural *Haemonchus contortus* infection. Parasitological parameters, humoral immunity, local and circulating cellular immune responses were evaluated in 19 Santa Ines and 19 Ile de France lambs undergoing different anthelmintic treatments regimens: suppressive treatments (SUP) or targeted selective treatments (TST) over a 5-month grazing period. Santa Ines lambs had significantly lower *Haemonchus* faecal egg count and worm burden compared to Ile de France regardless of treatment regime. In addition, circulating blood eosinophils count and parasite-specific IgG levels were significantly higher and more rapidly induced in Santa Ines lambs. Abomasal immune responses were generally greater in the resistant breed, which had significantly higher levels of parasite-specific IgA in mucus, and elevated number of globule leukocytes and CD3+ T cells within the abomasal mucosal. Furthermore, numbers of POU2F3+ epithelial cells, a tuft-cell specific transcription factor, were also elevated in the Santa Ines breed, suggesting that this breed is better able to initiate T-helper type 2 immune responses within the abomasum. In conclusion, the differential immunological responses detailed here are relevant to understanding resistance to gastrointestinal nematodes in other host breeds, as well as to resistance breeding as a sustainable control approach for parasitic infections.

Introduction

Gastrointestinal nematode (GIN) infections are among the main health problems affecting ruminants and are responsible for huge economic loss to the livestock industry [1]. Control of GIN is heavily dependent on anthelmintic treatment [2], however the high frequency of

dosing increases the prevalence of anthelmintic-resistant nematode populations, even with new compounds, such as monepantel [3, 4]. Insight into mechanisms involved in the appropriate gastrointestinal immune response to GIN is fundamental for the development of sustainable approaches, such as selective breeding and vaccination to reduce anthelmintic use [5–11].

Haemonchus contortus is an important GIN in sheep husbandry across the humid temperate and tropical regions worldwide. It is a highly pathogenic, blood-feeding parasite, responsible for massive economic loss, due to reduced productive performance, compromised

*Correspondence: ac.alb@hotmail.com

¹ School of Veterinary Medicine and Animal Science, UNESP–São Paulo State University, Rua Professor Doutor Walter Mauricio Correa s/n, Botucatu, SP 18618-681, Brazil

Full list of author information is available at the end of the article



reproduction and high mortality [3, 7, 12]. The emergence of multi-drug resistance *H. contortus* has focussed research on development of alternative control strategies, such as selective breeding for animals resistant to infection [5] and vaccination [8]. A vaccine, Barbervax[®], comprising native proteins extracted from the nematode gut has been introduced in Australia [13] and tested with promising results in Brazil [14–16]. However, its widespread use is limited, mainly due to cost, licensing, requirement for multiple vaccinations and additional strategies, such as nutritional improvement [15].

Host resistance to nematode species is related to the ability to develop strong innate and acquired immunity, limiting the establishment of infective larvae and/or eliminating the worm population [9, 17–21]. This differs from resilience, defined as the ability of animals to produce and reproduce in the face of parasite infection [22]. Resistance against GIN infection is a moderately heritable trait, and selection of animals with an efficient immune response to GIN may increase flock resistance and potentially be exploited as an alternative control measure [3, 23].

Protection against GIN infection is mediated by type 2 immune responses, involving induction of cytokines and antibody production, and expansion and mobilization of innate and adaptive immune cells [6, 10, 11, 24]. Parasite clearance is associated with innate and adaptive responses characterised by mucosal mast cells hyperplasia, globular leukocyte appearance, increased eosinophil concentration and induction of goblet cell hyperplasia with mucus production, while humoral responses involve IgG, IgE and IgA production [23, 25, 26]. However, the mechanisms involved in the initiation and the development of the immune response to GIN have not been fully elucidated. Some studies indicated that in the gut mucosa of resistant animals, upregulation of a T helper 2 (Th2)-type response is responsible for protection, while in susceptible animals, with chronic nematode infections, a Th1-type response is enhanced [19, 27, 28].

More recently, it was demonstrated in murine models that epithelial cells called tuft cells might be responsible for initiating type 2 responses to nematode infection, and release IL-25 to stimulate IL-4 production by Th2 cells through a feed-forward loop involving Group 2 Innate Lymphoid Cells (ILC2) [29, 30]. Wild-type mice with experimental *Nippostrongylus brasiliensis* infection showed worm clearance 13 days after infection. In contrast, mice deficient in tuft cells, through knockout of tuft cell specific transcription factor POU2F3, presented numerous worms 42 days post-infection. This demonstrated the importance of tuft cells in the immune response against GIN in mice [29]. Our ongoing work is detailing the dynamics during infection and gene

expression profile of ovine abomasal POU2F3+ cells to determine if these cells are equivalent to mouse tuft cells (Hildersley et al. unpublished data).

Our previous work identified Santa Ines hair sheep as naturally resistant to *H. contortus* infections at different age categories, in which they presented a high number of blood eosinophils, high production of IgG, low eggs per gram of faeces (EPG), normal packed cell volume (PCV) and low worm burden, in addition to requiring fewer anthelmintic treatments in comparison with other commercial wool-sheep breeds [26, 31]. The present study aimed to elucidate and compare the innate and adaptive immunological response between Santa Ines and Ile de France lambs. Humoral and cellular responses were compared during infection and at post-mortem to determine in detail the mechanisms of resistance against natural *H. contortus* infection in the field.

Materials and methods

Ethical considerations

The experiment was carried out at São Paulo State University (UNESP), Botucatu-SP, Brazil. All animal procedures were in accordance with the ethical standards and were approved by the Animal Use Ethics Committee of the FMVZ/UNESP (47/2016).

Experimental design

The experimental design was described previously [4] and was carried out over 5 months, from October 2016 to February 2017, during the rainy season. Briefly, the experiment was in a 2 × 2 factorial design, with 19 Santa Ines (SI) and 19 Ile de France (IF) 3-month-old uncastrated male lambs purchased from commercial farms located in São Paulo state, Brazil. The lambs were raised indoors at their farms of origin. The lambs were allocated to the two anthelmintic treatment groups: suppressive (SUP)—animals drenched every 2 weeks with monepantel (2.5 mg/kg; Zolvix[®], Novartis) in order to maintain the grazing lambs and their pastures as free of worms as possible; targeted selective treatment (TST)—animals under continuous challenge infection for 5 months and underwent monepantel treatment only when they showed a PCV ≤ 20% corresponding to category 3 of FAMA-CHA[®] method [32], in order to prevent the occurrence of mortality and/or severe haemonchosis. Animals were allocated into each group by stratified randomization, balanced as far as possible taking into consideration body weight and nematode faecal egg counts (FEC) at start of the trial prior to drenching.

Suppressive groups (SUP-SI and SUP-IF) were drenched on arrival with the following combination of anthelmintics: albendazole (10 mg/kg, Endazole[®] 10 Cobalto, Hipra), levamisole (9.4 mg/kg, Ripercol[®] L 150 F,

Zoetis), and monepantel (2.5 mg/kg, Zolvix[®], Novartis). Afterwards, they were allocated to the paddock after no nematode eggs were detected in a series of faecal examinations. The last anthelmintic drench for lambs under suppressive treatment was administered on week 19 and they were slaughtered on week 21. The lambs in the TST group (TST-SI and TST-IF) were not treated on arrival at the experimental facilities. Instead, they were introduced onto clean pasture that became contaminated with eggs from the nematodes acquired at their origin farm.

Faecal examination

Faecal samples were collected upon animals' arrival and then weekly, directly from the rectum of each animal in polyethylene bags previously labelled and kept refrigerated until processing. The modified McMaster technique [33] was used to measure faecal eggs count (FEC), in which each nematode egg counted represented 100 eggs/g of faeces (EPG). Faecal cultures were prepared separately for each group for production of GIN infective third-stage larvae (L3) on animals' arrival and then weekly to identified morphologically and counted [33]. Based on the proportion of L3 identified as *H. contortus* in the cultures, the *Haemonchus* EPG of each lamb was estimated.

Worm burden

All lambs were slaughtered and the gastrointestinal tract removed. The abomasum was opened along its greater curvature and the contents placed in graduated buckets. Aliquots of 10% of the total abomasum were collected individually, stored in plastic flasks and preserved in -20°C freezer. All nematodes present in the 10% preserved material were identified morphologically and quantified, according to their developmental stage [33, 34] and stored in 70% ethanol.

Haematology

Blood samples (5 mL) were collected weekly by jugular vein puncture into Vacutainer[®] tubes containing anticoagulant (EDTA). The blood in the tube was centrifuged to allow plasma separation. Aliquots of plasma samples were stored at -20°C and -80°C prior to ELISA. Eosinophil counts in the peripheral blood were performed in a Neubauer's chamber after staining with Carpentier's solution [35], and the counts expressed as the number of eosinophil cells per μL of blood.

Histology

Abomasal tissue samples were fixed in 4% buffered formaldehyde for 48 h, then moved to 70% ethanol, and paraffin-embedded. Tissue sections were cut to 5 μm thick and mounted on glass slides. Eosinophils and globule

leukocytes were counted on Haematoxylin and Eosin (H&E) stained sections whereas mast cells were counted on sections stained with 1% toluidine blue. All cells were counted in sixty randomly selected fields of view per animal in a 0.01 mm^2 area at 1000 \times magnification [adapted from [6]]. The counts were expressed as cells/ mm^2 tissue surface.

Immunohistochemistry (IHC)

Immunohistochemistry sections were mounted on Superfrost Plus glass slides (Thermo Fisher Scientific). The tissues were dewaxed in xylene, rehydrated and heat-induced antigen-retrieval was performed by autoclaving at 121°C for 10 min in 10 mM citrate buffer pH 6.0. This was followed by two washes in PBS and one in PBS/0.5% Tween 80 (PBS/T80) for 5 min, and then endogenous peroxidase activity was blocked with 0.3% hydrogen peroxide in PBS/T80 for 20 min at room temperature (RT). Following a further two PBS/T80 washes for 5 min each, slides were loaded into a Sequenza immunostaining centre rack (Thermo Fisher Scientific). The sections were incubated with 25% goat serum in PBS/T80 for 1 h at RT to reduce nonspecific binding and background staining. The primary antibodies and their appropriate isotype control were diluted in PBS/T80 containing 10% normal goat serum (NGS) and incubated overnight at 4°C . Slides were washed twice in PBS and incubated with the secondary antibody at RT for 30 min. This was followed by PBS wash and incubation with 3,3'-diaminobenzidine (DAB) for 7.5 min at RT. Thereafter, the slides were washed in distilled water, counterstained with haematoxylin, dehydrated and mounted in Shandon synthetic mountant (Thermo Fisher Scientific). Detailed information of all antibodies used in immunohistochemistry are specified in Additional file 1.

Images were taken from 10 random areas of each slide for POU2F3+ (putative tuft cell) counting at 400 \times magnification using microscope Olympus BX50 with digital camera Olympus DP70. POU2F3+ epithelial cell frequency was calculated as the proportion of epithelial cells positive for POU2F3, expressed as a percentage (adapted from [30]). Ten random areas of each slide were used to perform the T and B cell counting using calibrated graticule at 250 \times magnification on Dialux 20 EB Microscope (Leitz Wetzlar, Germany). T and B cells counts were expressed as the number of positive cells per mm^2 .

Enzyme-linked immunosorbent assay (ELISA)

Haemonchus contortus-specific IgG

Plasma samples collected at 11 time-points were used to determine IgG levels against L3-soluble extract of *H. contortus*. The L3 extract was prepared as previously

described [17]. A previously described protocol was applied to determine the parasite-specific plasma IgG levels [36], with some modifications: the plates were coated with 2 µg of antigen/mL; each wash was done three times, rotating through 180 and re-washing three more times; the negative control (NC) sample used was from a worm free animal, as previously described [37]; the plasma positive control (PC) sample used was from a sheep artificially infected with both *H. contortus* and *Trichostrongylus colubriformis* every 3 days for 84 days. Results were expressed as the percentage of optical density (OD) value of the PC plasma sample [38].

***Haemonchus contortus*-specific IgA**

A 5 cm piece from the greater curvature of abomasum was sampled and stored at −20 °C until processing for the extraction of mucus. Tissues were thawed and mucus was scraped off with a glass slide and stored in a falcon tube on ice, followed by addition of PBS supplemented with protease inhibitors (Complete®, Roche) to each sample in a proportion of 4:1 (4 mL PBS + 1 mL of mucus). The samples were shaken for 1 h at 4 °C and centrifuged for 30 min at 4 °C and 3000 × g. The supernatant was collected and centrifuged again for 30 min at 4 °C and 15 000 × g.

ELISA assays for parasite-specific IgA recovered from abomasal mucus were carried out against *H. contortus* L3 and adult extract as previously described [36] with a few differences: plates were coated with 5 µg of antigen/mL; each wash was done three times, rotating through 180° and re-washing three more times; mucus samples were diluted in PBS-GT (1:20) and rabbit anti-sheep IgA peroxidase-conjugated antibody was diluted at 1:20 000. The results were expressed as OD value minus OD-blank sample [38].

Total plasma IgE

Total IgE antibody levels were determined in plasma from six time-point samples by sandwich enzyme immunoassay using a Sheep Immunoglobulin E ELISA kit (My BioSource®, San Diego, USA). The data were expressed in µg/mL.

Statistical analysis

All data were submitted to normality test and transformed using $\log_{10}(x + 1)$ when necessary. Data with single measures and data for repeated measures at several time points were analysed by ANOVA using the General Linear Model (GLM) and groups means were compared by Tukey's test using Statistical Analysis System, version 9.2 (SAS Institute, Inc., Cary, NC, USA). Values of $P < 0.05$ were considered statistically significant.

Results

Parasitology

Before the beginning of the trial, the young lambs had been infected with *Haemonchus* spp. and *Trichostrongylus* spp. on their farms of origin. Then, during the trial, the lambs under suppressive treatment were maintained with low exposure of strongyle infection during the first 4 months of the trial, with increase in EPG values and L3 detected in the faecal culture in the last month of the trial, due to development of anthelmintic resistance [4]. The animals under TST were continuously challenged by natural GIN infections for 5 months as determined by the presence of parasite eggs within faeces throughout the study period (Figure 1). *Haemonchus contortus* at different developmental stages, was the only species found in the abomasum at post-mortem, with significantly lower worm burdens in the Santa Ines lambs in both suppressive and TST treated groups ($P < 0.0001$, Table 1).

Mean total *H. contortus* burden was lower in TST groups of both breeds, suggesting that continuous infection for 5 months induced some protection in the TST-lambs in comparison with lambs undergoing suppressive anthelmintic treatments, in which patent GIN infections were only seen at the end of the trial (Table 1), related to the development of anthelmintic resistance in surviving worms [4]. There was a breed effect on all worm stages of development (Table 1), with Santa Ines lambs presenting a lower burden for all stages recovered ($P < 0.0001$). No significant breed × treatment interaction was identified in *H. contortus* burdens. The intestinal GIN species *T. colubriformis*, *Strongyloides papillosus*, *Cooperia curticei* and *Trichuris* spp. were also found in the lambs of the both breeds.

There was a substantial difference between the breeds in the number of salvage drenches required in the TST groups: all Ile de France lambs needed to be treated with monepantel due to PCV < 20%, treatments ranging from one to four times, totalling 19 drenches during the trial. In contrast, only two Santa Ines lambs needed to be treated: one once and another twice, detailed in [4]. One of these Santa Ines presented elevated *Haemonchus* worm burden (1680 specimens) in relation to animals in the same group (group average = 283). Therefore, our results showed that besides a significant breed difference, there was also genetic variability in each breed influencing the degree of resistance.

Antibody responses

Plasma IgG and IgE levels

The mean levels of anti-*H. contortus* L3 IgG in plasma showed changes over time, resulting in significant time × breed ($P < 0.04$) and time × treatment ($P < 0.0001$)

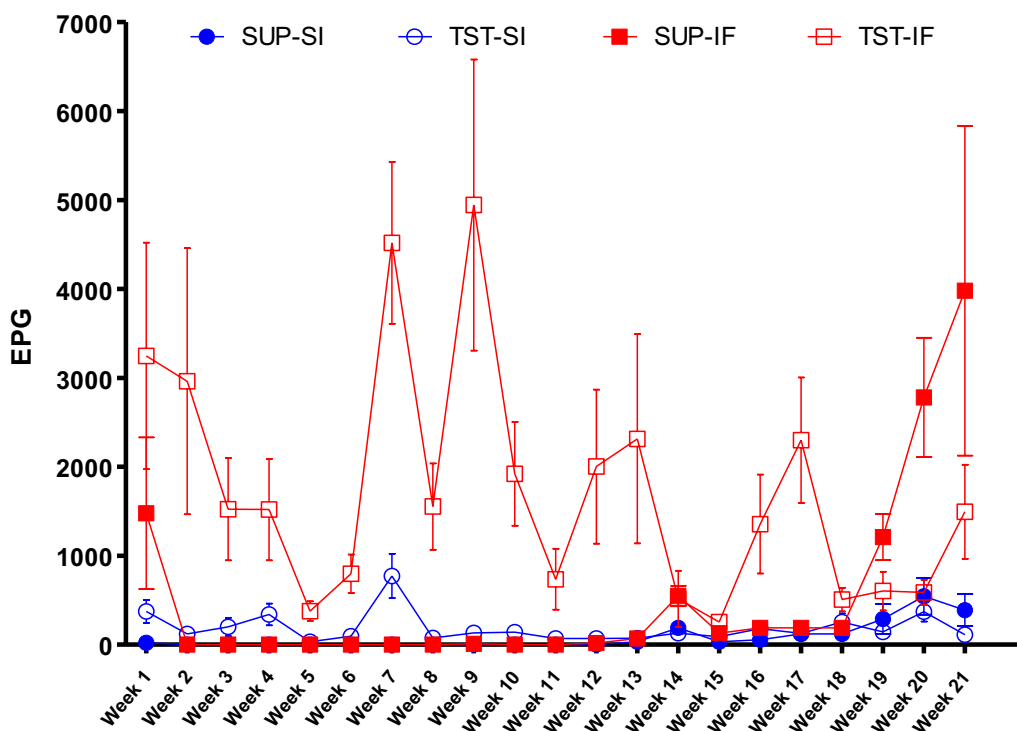


Figure 1 Means of *Haemonchus contortus* eggs per gram of faeces (EPG). EPG counting of the Santa Ines (SI) and Ile de France (IF) lambs naturally infected with *H. contortus* and under suppressive (SUP) or targeted selective treatment (TST) with anthelmintics. Values represent mean ± standard error.

Table 1 Developmental stages of *Haemonchus contortus* means (minimum–maximum values) of the Santa Ines and Ile de France lambs under suppressive or targeted selective treatment (TST) programme with anthelmintics

Development stages	Santa Ines		Ile de France		Effects (<i>P</i> value)	
	Suppressive (<i>n</i> = 9)	TST (<i>n</i> = 10)	Suppressive (<i>n</i> = 10)	TST (<i>n</i> = 9)	Breed	Treatment programme
Early L4	31 (0–80)	114 (0–650)	141 (30–600)	597 (10–142)	< 0.0001	ns
Female late L4	38 (0–120)	60 (0–360)	103 (0–360)	414 (0–1450)	0.0036	ns
Male late L4	20 (0–70)	63 (0–360)	100 (10–420)	456 (0–2010)	0.0002	ns
Female early L5	92 (0–590)	5 (0–30)	389 (100–830)	179 (0–460)	< 0.0001	0.0094
Male early L5	49 (0–270)	16 (0–140)	334 (80–710)	160 (0–530)	< 0.0001	0.0066
Adult female	121 (0–400)	17 (0–110)	921 (210–2620)	279 (0–600)	< 0.0001	0.0015
Adult male	121 (0–420)	8 (0–50)	881 (190–2190)	289 (0–740)	< 0.0001	0.0011
Total worm burden	472 (20–1330)	283 (0–1680)	2869 (720–7100)	2373 (60–7040)	< 0.0001	0.0125

L: larvae, ns: not significant (*P* > 0.05).

interactions. Breed had an effect (*P* < 0.05) on mean anti-*H. contortus* IgG levels in the beginning of the trial (on week 5, week 7 and week 9), when Santa Ines lambs showed a sharp increase in production of anti-*H. contortus* IgG level. Treatment program had an effect on IgG levels at five time-points, between week 9 and week 17, when TST groups showed the highest IgG levels. In the

last month of the trial, the means of all groups were similar (Figure 2). In contrast, we did not detect any breed or treatment effect (*P* > 0.05) in total IgE levels in plasma. There was a significant time × treatment interaction (*P* < 0.02), with the highest mean IgE levels in groups under TST treatment at the last sampling (Figure 3).

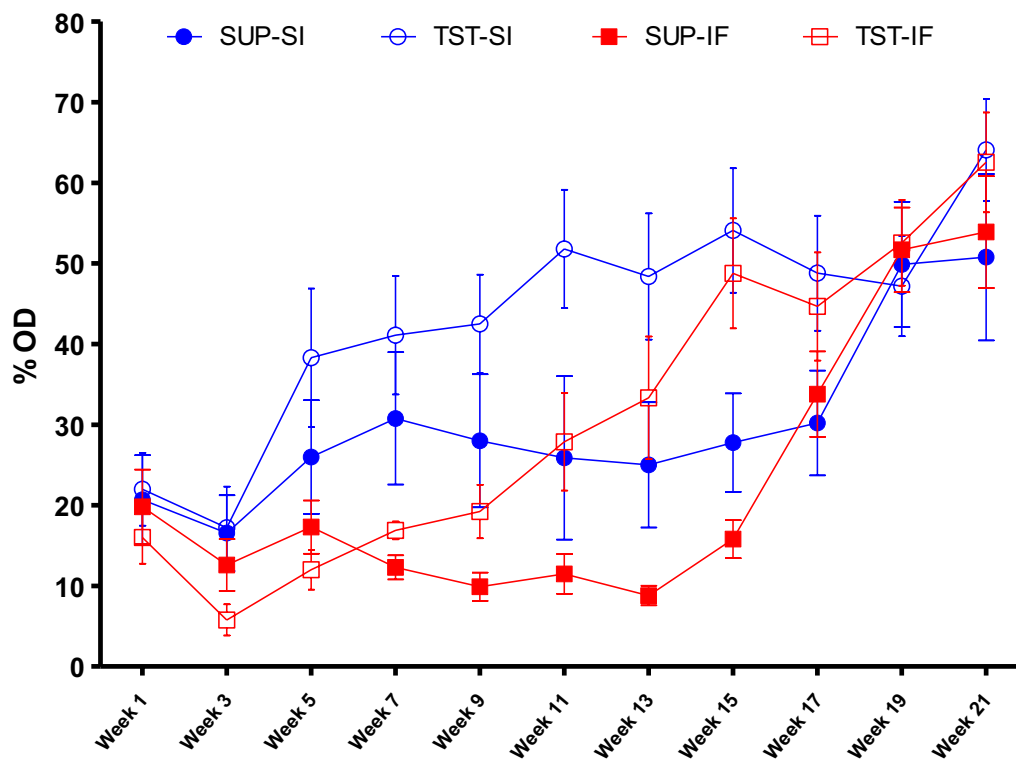


Figure 2 Mean levels of anti-*Haemonchus contortus* L3 IgG (% OD) in plasma. IgG levels of the Santa Ines (SI) and Ile de France (IF) lambs naturally infected with *H. contortus* and under suppressive (SUP) or targeted selective treatment (TST) with anthelmintics. Values represent mean \pm standard error.

Abomasal IgA levels

There was a significant breed effect on mean levels of *H. contortus* L3-specific IgA in abomasal mucus. Levels of L3-specific IgA were significantly ($P < 0.05$) higher in Santa Ines lambs compared to Ile de France lambs independent of treatment group (Figure 4). Mean levels of adult *H. contortus*-specific IgA were relatively low and similar among the four groups.

Cellular responses

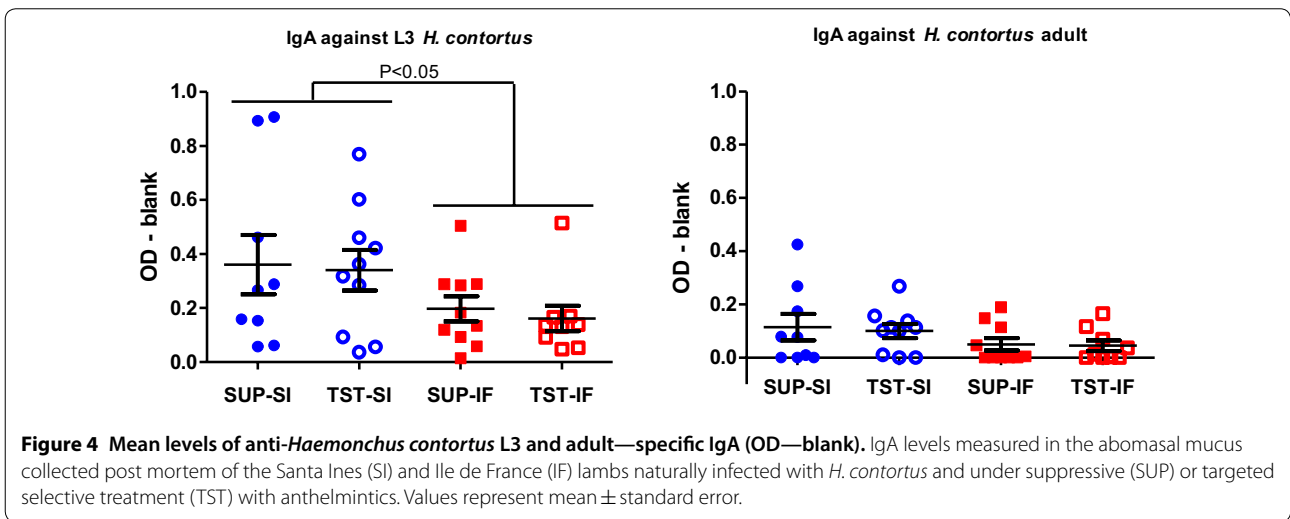
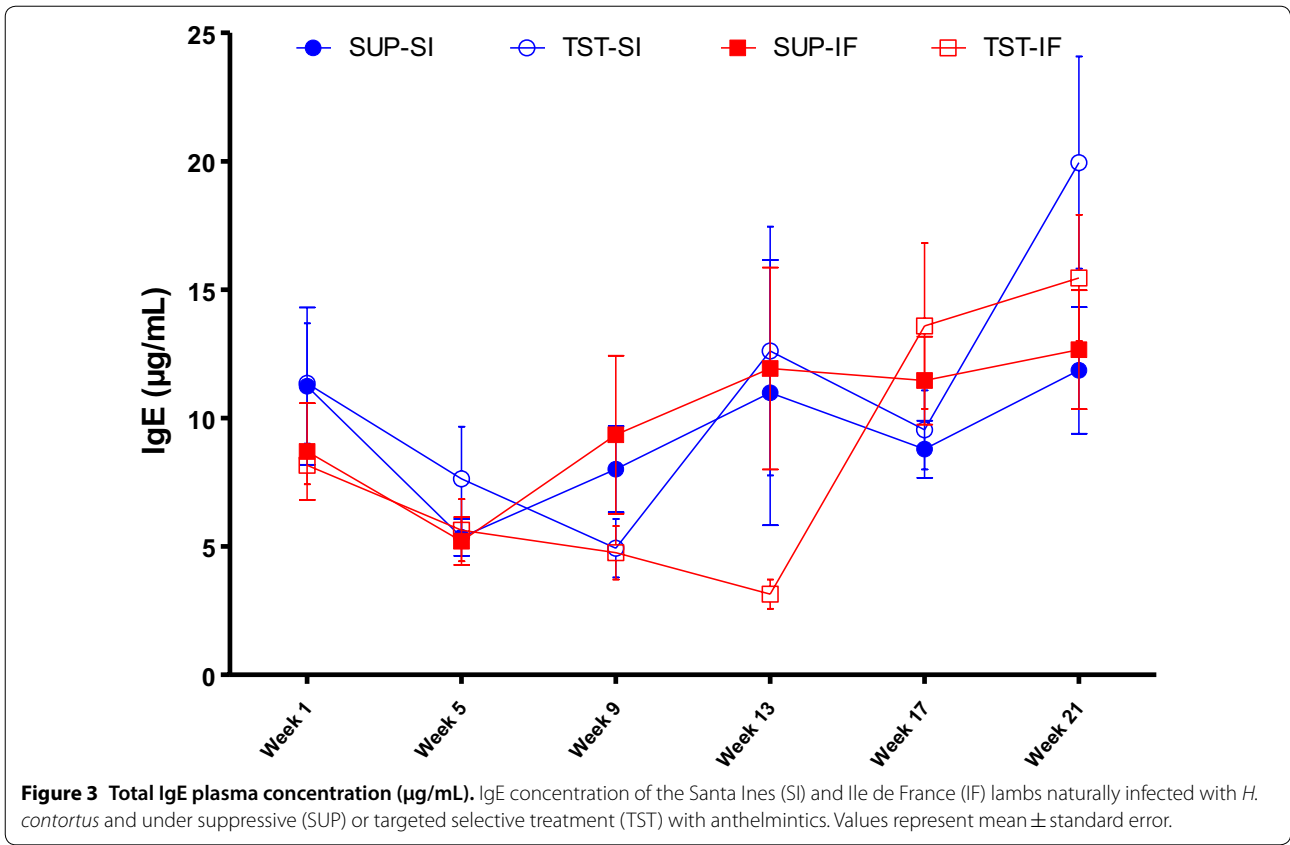
Blood eosinophils

The mean blood eosinophil count of each animal showed changes over time with significant time \times breed ($P < 0.02$) and time \times treatment interactions ($P < 0.0001$). There was breed \times treatment interaction at three time-points at the beginning of the trial: week 4, week 5 and week 6, when TST-SI lambs had significantly higher averages than the other groups. Breed had the greatest effect on mean blood eosinophil count, with Santa Ines lambs showing early eosinophilia and the highest mean eosinophil counts during the trial. All means increased progressively until week 16, followed by stabilization until the end of the trial (Figure 5).

Abomasal cellular immune responses

Santa Ines and Ile de France lambs under TST showed the highest number of mast cells (MC) and globular leukocytes (GL). In the case of GL, but not MC, there was a significant ($P < 0.05$) effect of breed, with Ile de France under suppressive treatment displaying the lowest GL counts. A significant effect of treatment was found for both cells ($P = 0.0001$), with higher MC and GL counts in lambs undergoing TST. A significant breed \times treatment interaction was also found for GL counts. Numbers of eosinophils were similar among groups without any breed or treatment effect ($P > 0.05$) (Table 2).

IHC revealed positive nuclear staining in the abomasum mucosa of Ile de France and Santa Ines lambs of POU2F3+ epithelial cells (Figures 6A and B) and positive labelling of CD3+ T cells (Figures 6C and D), and CD79 α + B cells (Figures 6E and F). There was a significant breed effect ($P < 0.05$) on % POU2F3+ cells in the epithelium and T cell numbers within the abomasal mucosa, with highest mean levels in the Santa Ines breed. The treatment regimen had an effect ($P < 0.05$), with greater frequency of POU2F3+ cells in the TST groups.



B cell numbers were similar among groups ($P > 0.05$) (Table 2).

Discussion

The immune response against GIN infection is characterised by reductions in faecal egg count and worm burden and can be influenced by several factors such as age, sex, physiological status (especially parturition and lactation), and breed [26, 39–41]. Previous studies have

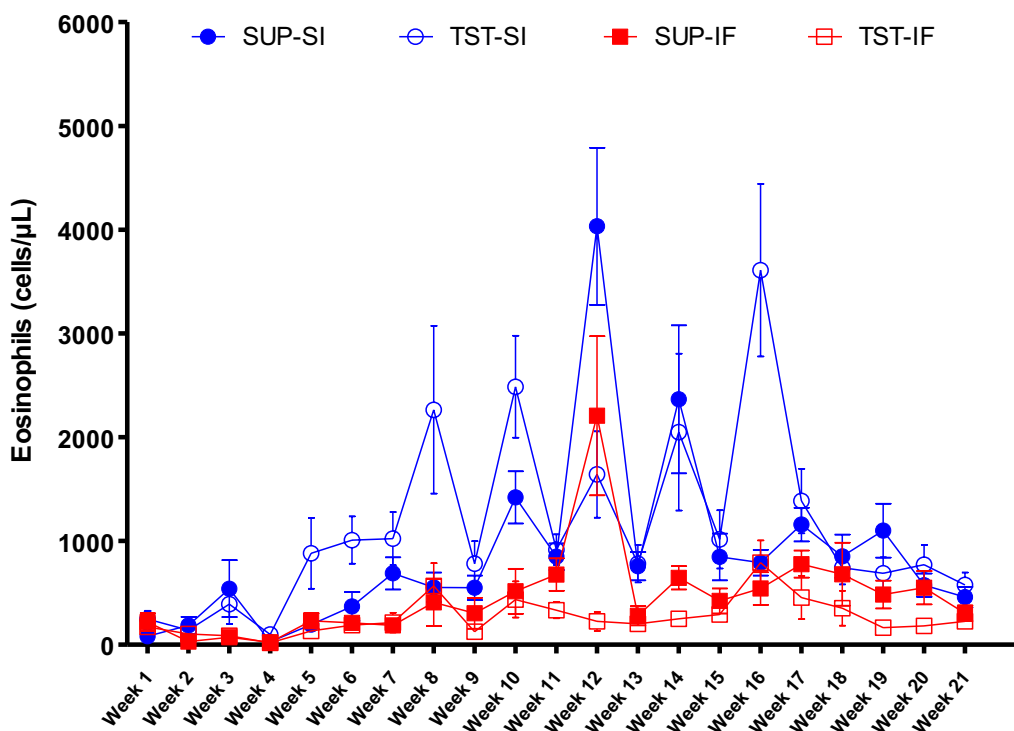


Figure 5 Mean blood eosinophil count (cells/ μ L). Blood eosinophil counting of the Santa Ines (SI) and Ile de France (IF) lambs naturally infected with *H. contortus* and under suppressive (SUP) or targeted selective treatment (TST) with anthelmintics. Values represent mean \pm standard error.

Table 2 Averages (minimum–maximum values) of eosinophils (cells/ mm^2), mast cells (cells/ mm^2), globule leukocytes (cells/ mm^2), POU2F3 + cells (%), T cells (cells/ mm^2) and B cells (cells/ mm^2) in abomasum mucosa of the Santa Ines and Ile de France under suppressive or targeted selective treatment (TST) programme with anthelmintics

Cells	Santa Ines		Ile de France		Effects (P-value)		
	Suppressive (n = 9)	TST (n = 10)	Suppressive (n = 10)	TST (n = 9)	Breed	Treatment programme	Breed x treatment
Mast cells	51 (17–97)	132 (17–305)	28 (0–83)	113 (15–165)	ns	0.0001	ns
Globule leukocyte	66 (27–145)b	148 (55–252)b	30 (0–118)a	142 (18–238)b	0.0031	< 0.0001	0.0228
Eosinophils	95 (10–277)	90 (5–197)	80 (5–317)	42 (7–60)	ns	ns	ns
POU2F3+ cells	7.33 (3.0–12.0)	11.18 (1.9–13.7)	3.64 (2.0–5.5)	7.62 (4.6–11.3)	< .0001	< .0001	ns
T cells	993.5 (768–1499)	1102.5 (740–1458)	808.0 (481–1167)	788.0 (582–1030)	0.0012	ns	ns
B cells	94.0 (27.2–181.7)	124.5 (50.9–249.4)	99.2 (14.8–260.9)	45.4 (12.8–130.4)	ns	ns	ns

Means followed by different letter in the same line differ from each other by Tukey's test ($P < 0.05$).

ns: not significant ($P > 0.05$).

shown that Santa Ines is a relatively resistant breed to *H. contortus* infections at different stages of life: sucking lambs [42], weaned lambs [26], ewes around parturition and during lactation [39]. However, the mechanisms involved in their greater resistance to GIN infection are not clear.

Taking into consideration that resistance to parasites is largely immune mediated [13, 28], our aim

was to look for differences in immune responses that could explain resistance or susceptibility between breeds. The infections were naturally acquired by the lambs during grazing. Therefore, it was not possible to determine the number of L3 they ingested during the trial. Nevertheless, we assume that, in each treatment group, animals ingested a similar number of infective larvae because they were under the same grazing

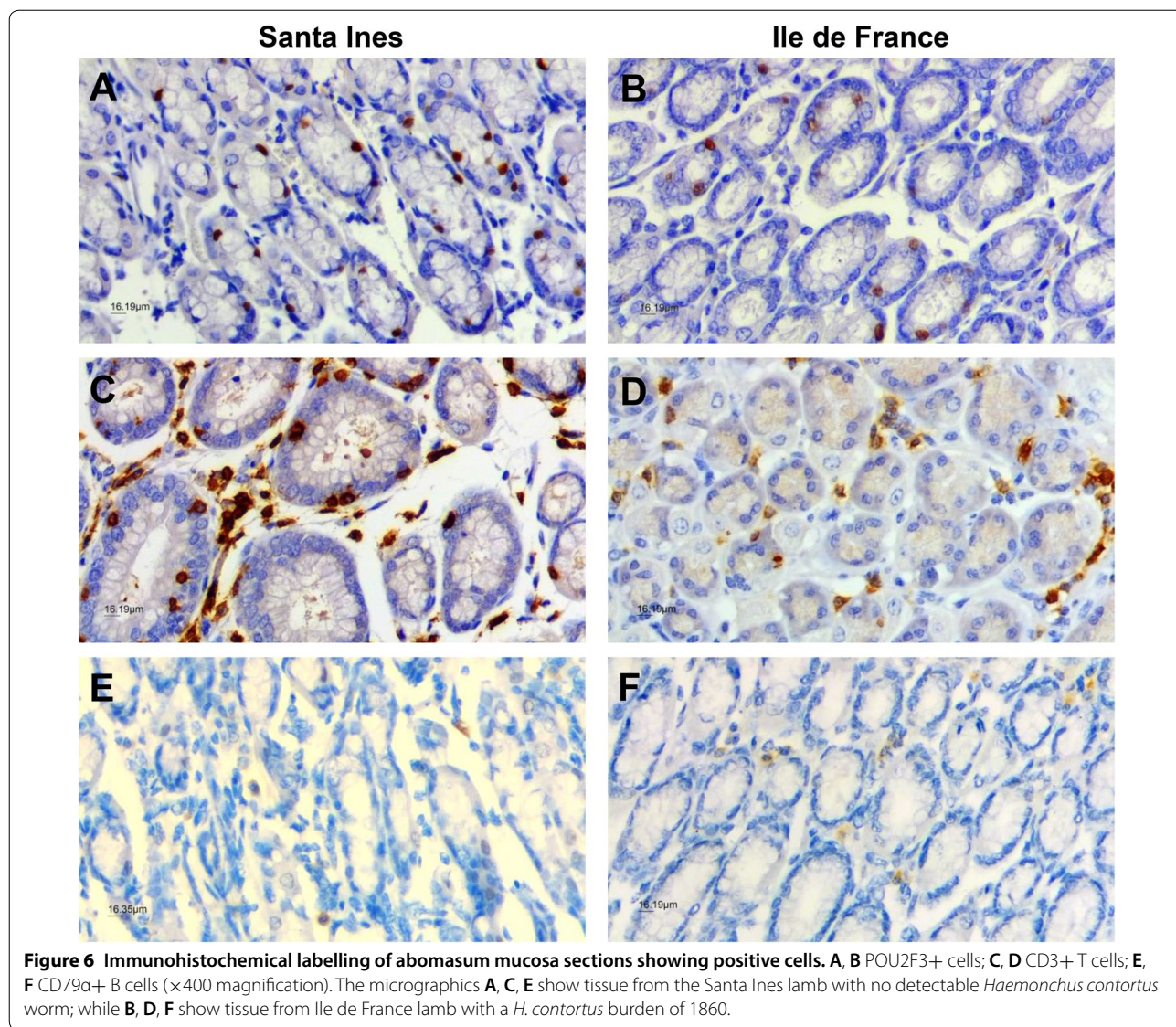


Figure 6 Immunohistochemical labelling of abomasum mucosa sections showing positive cells. **A, B** POU2F3+ cells; **C, D** CD3+ T cells; **E, F** CD79a+ B cells (x400 magnification). The micrographics **A, C, E** show tissue from the Santa Ines lamb with no detectable *Haemonchus contortus* worm; while **B, D, F** show tissue from Ile de France lamb with a *H. contortus* burden of 1860.

management. Our study was divided into two stages: firstly, the evaluation of circulating immune responses in lambs exposed to natural *H. contortus* infection and secondly, the evaluation of local abomasal cellular and antibody responses from the same lambs at post-mortem.

In the first stage, the major differences were higher levels of anti-*H. contortus* L3-specific IgG and number of blood eosinophils in the Santa Ines breed, especially at the beginning of the trial, indicating that the response against *H. contortus* occurs earlier in this breed than in the Ile de France. At post-mortem, there were marked differences between breeds, with Santa Ines showing significantly higher levels of mucus anti-L3 IgA, POU2F3+ cells, T cells and GL. These local responses may be

implicated in limiting establishment of infective larvae and/or eliminating adult parasites [6, 11, 20, 30, 44].

Studies of other resistant sheep breeds identified earlier and robust initial type 2 responses against GIN infection, with production of specific antibodies [10, 19, 20, 27]. In the current study, earlier and marked IgG production were observed in Santa Ines lambs, however, both breeds presented similar IgG levels at the end of experiment, demonstrating that with the progression of the trial, the Ile de France lambs were also responding to *Haemonchus* infection. Such level of IgG response, however, was not enough to protect the Ile de France from haemonchosis. Similar results have been reported previously, with no difference in IgG level between resistant and susceptible breeds infected with *H. contortus* [27], suggesting

that resistance to *H. contortus* infection is not related to plasma IgG level.

IgE is the main antibody involved in the type 2 response against GIN infection and its expression is associated with greater resistance and shows moderate to high heritability [23]. We observed that total IgE concentration increased over time, however, there was no significant difference between breeds. This may be due to IgE being present at extremely low serum concentrations with a short half-life. Most of the IgE is found irreversibly attached to specific receptors of mast cells and eosinophils [45, 46]. In future studies, it will be interesting to evaluate IgE attached to inflammatory cells or *H. contortus*-specific IgE level in the blood serum, which can provide more informative results.

In the present study, the resistant breed presented the highest means of mucosal anti-*H. contortus* L3-specific IgA, suggesting that this immunoglobulin had an important regulatory role in the local immune response against *H. contortus* infection in the Santa Ines lambs. IgA is associated with reductions in worm length and fertility in *H. contortus* infection, and early worm expulsion [44, 47, 48].

The early and robust blood eosinophil expansion in the Santa Ines lambs for almost the entire experimental period may contribute to low nematode establishment and elimination [49], and as consequence low FEC and low worm burden in the resistant breed. The magnitude of eosinophil response may be related to resistance to helminth infection. This cell type remains briefly in the bloodstream before migrating to tissues, where they may stay for several weeks, depending on the presence of Th2 cytokines, or undergo apoptosis [49, 50]. Once triggered, eosinophil degranulation may occur by exocytosis, piecemeal degranulation, explosive degranulation with consequent cellular lysis or formation of extracellular traps [51–53]. Unlike in blood, numbers of eosinophils in the mucosa were similar in the two breeds. This may reflect the time-point at which mucosal eosinophils were enumerated, as at post-mortem circulating levels of eosinophils were similar between the two breeds. Another possibility is that the turn-over rate of mucosal eosinophil populations in the Santa Ines breed was more rapid, meaning that higher recruitment of blood eosinophils into the abomasum in the Santa Ines breed would not necessarily result in elevated eosinophil numbers in the mucosa. Enumeration of mucosal eosinophils at time-points of infection where blood eosinophil numbers were significantly different between the two breeds would be required to investigate this further.

Rapid rejection of nematodes in sheep is associated with expansion and mobilization of MC and GL into the gut mucosa [6, 54, 55]. The strength of MC response is linked to Th2 cytokines and IgE production [56, 57],

whereby resistant breeds show greater responses [20, 27, 43]. We observed higher MC and GL cells counts in the Santa Ines resistant breed, but only the GL count was significantly different between breeds. GL derive are thought to be de-granulated MC [54]. Previous study using a gut washing method has shown that GL may leave the epithelium and can be found in the gut lumen in large amounts [58]. Future studies could apply this method, which may identify an even more marked difference between resistant and susceptible animals.

Epithelial cells are the first cell type in contact with the parasite, indicating that before immune engagement there is a need for epithelial activation [59]. Epithelial chemosensory cells called tuft cells were shown to drive early signals in the small intestine to initiate type 2 immunity against helminth infection in mice [10, 60]. These cells are the dominant source of IL-25 that induces a Th2 response through the action of group 2 innate lymphoid cells (ILC2s) to produce specific type 2 cytokines [61, 62]. At present we cannot be sure that the POU2F3+ cells identified here are the equivalent of tuft cells in mice, and work is ongoing to determine this (Hildersley et al. unpublished data). Interestingly, Santa Ines sheep showed a higher percentage of POU2F3+ cells in the abomasum mucosa compared to Ile de France, indicating a possible role for these cells in resistance against *H. contortus* infection. The B cells count was similar between breeds, in agreement with other studies [6, 27], that reported no difference in B cells between resistant and susceptible breeds.

There was a marked difference between treatments groups with regard to MC, GL counts and POU2F3+ cells. The greater number of these cells in the TST groups of both breeds was possibly a result of the longer and greater GIN challenge in comparison with animals under the suppressive treatment, which showed increase in parasite egg counts in the last month of the trial and had significantly higher *H. contortus* worm burdens at post-mortem. This suggests that expansion and/or recruitment of these Th2 associated immune cells may be most sensitive to nematode continuous challenging compared to other immune responses measured in this study.

Assessing differences in the local cellular responses between breeds at early time points after infection could be informative. Particular focus would be on T cells and POU2F3+ cells (putative tuft cells), and whether earlier and/or greater activation of these putative tuft cells drive a greater type 2 response in Santa Ines breed. Determining the resistance mechanisms is important for understanding breed resistance and identifying genetic markers that may advance selective breeding as a sustainable control strategy [5].

In conclusion, Santa Ines lambs showed early and robust immune response against *H. contortus* infection, with strong local immune responses, effective in limiting the establishment and/or eliminating the worm population. This breed has potential value in improving the resistance of sheep to GIN infection, as a sustainable alternative control strategy.

Supplementary information

Supplementary information accompanies this paper at <https://doi.org/10.1186/s13567-019-0722-3>.

Additional file 1. Antibodies used in immunohistochemistry to identify positive cells on the abomasum mucosa.

Acknowledgements

The authors would like to thank David Frew and Mark Dagleish from the Moredun Research Institute for advice and assistance with the immunohistochemical analysis.

Authors' contributions

ACAA conducted the trial, all parasitological, humoral and local immune response analysis and wrote the main manuscript. CCB assisted humoral measurements and in conjunction with FAA performed parasitological analyses and managed hosts. KAH helped with immunohistochemistry methodology. TNM and CB supervised immunohistochemistry analysis. AFTA designed the study and supervised all research stages. All authors read and approved the final manuscript.

Funding

ACAA received financial support from CAPES (Brazilian Federal Agency for Support and Evaluation of Graduate Education, PDSE—8881.188861/2018-01); CCB received financial support from FAPESP (The São Paulo Research Foundation, 2015/00221-2); FAA received financial support from FAPESP (2015/25718-7); KAH is supported by an Industrial Partnership Ph.D. studentship funded by University of Glasgow, Moredun Foundation and Pentlands Science Park, UK; AFTA received financial support from CNPq (National Council for Scientific and Technological Development, 303712/2013-9); and TNM is supported by the Scottish Government' Rural Affairs, Food and the Environment (RAFE) Strategic Research Portfolio 2016-2021.

Competing interests

The authors declare that they have no competing interests.

Author details

¹ School of Veterinary Medicine and Animal Science, UNESP—São Paulo State University, Rua Professor Doutor Walter Mauricio Correa s/n, Botucatu, SP 18618-681, Brazil. ² Institute of Biosciences, UNESP—São Paulo State University, Rua Professor Dr. Antônio Celso Wagner Zanin, 250, Botucatu, SP 18618-689, Brazil. ³ Institute of Biodiversity, Animal Health and Comparative Medicine, UoG—University of Glasgow, Glasgow G61 1QH, UK. ⁴ Disease Control Division, MRI—Moredun Research Institute, Pentlands Science Park, Bush Loan, Penicuik, Midlothian EH26 0PZ, UK.

Received: 16 September 2019 Accepted: 8 November 2019

Published online: 29 November 2019

References

- Valcárcel F, Aguilar A, Sánchez M (2015) Field evaluation of targeted selective treatments to control subclinical gastrointestinal nematode infections on small ruminant farms. *Vet Parasitol* 211:71–79
- Jackson F, Bartley D, Bartley Y, Kenyon F (2009) Worm control in sheep in the future. *Small Rumin Res* 86:40–45
- Amarante AFT (2014) Sustainable worm control practices in South America. *Small Rumin Res* 118:56–62
- Albuquerque ACA, Bassetto CC, Almeida FA, Amarante AFT (2017) Development of *Haemonchus contortus* resistance in sheep under suppressive or targeted selective treatment with monepantel. *Vet Parasitol* 246:112–117
- Zvinorova PI, Halimani TE, Muchadeyi FC, Matika O, Riggio V, Dzama K (2016) Breeding for resistance to gastrointestinal nematodes—the potential in low-input/output small ruminant production systems. *Vet Parasitol* 225:19–28
- Balic A, Bowles VM, Meeusen ENT (2002) Mechanisms of immunity to *Haemonchus contortus* infection in sheep. *Parasite Immunol* 24:39–46
- Rouatbi M, Gharbi M, Rjeibi MR, Ben Salem I, Akkari H, Lassoued N, Reik M (2016) Effect of the infection with the nematode *Haemonchus contortus* (Strongylida: Trichostrongylidae) on the haematological, biochemical, clinical and reproductive traits in rams. *Onchocytosis* 83:1–8
- Bassetto CC, Amarante AFT (2015) Vaccination of sheep and cattle against haemonchosis. *J Helminthol* 89:517–525
- Inclan-Rico JM, Siracusa MC (2018) First responders: innate immunity to helminths. *Trends Parasitol* 34:861–880
- Sorobetea D, Svensson-Frej M, Grenic R (2018) Immunity to gastrointestinal nematode infections. *Mucosal Immunol* 11:305–315
- Meeusen ENT, Balic A, Bowles V (2005) Cells, cytokines and other molecules associated with rejection of gastrointestinal nematode parasites. *Vet Immunol Immunopathol* 108:121–125
- Besier B, Kahn LP, Sargison ND, Van Wyk JA (2016) The pathophysiology, ecology and epidemiology of *Haemonchus contortus* infection in small ruminants. *Adv Parasitol* 93:95–143
- Besier B, Kahn L, Dobson R, Smith D (2015) Barbevax[®]—a new strategy for *Haemonchus* management. In: Proceedings of the Australian veterinary association (AVA) annual conferences, Pan Pacific (NZVA and AVA) veterinary conference, combined proceedings. Brisbane, May 2015, Australia, pp 168–174
- Bassetto CC, Picharillo MÉ, Newlands GFJ, Smith WD, Fernandes S, Siqueira ER, Amarante AFT (2014) Attempts to vaccinate ewes and their lambs against natural infection with *Haemonchus contortus* in a tropical environment. *Int J Parasitol* 44:1049–1054
- Bassetto CC, Almeida FA, Newlands GFJ, Smith WD, Castilhos AM, Fernandes S, Siqueira ER, Amarante AFT (2018) Trials with the *Haemonchus* vaccine, Barbevax[®], in ewes and lambs in a tropical environment: nutrient supplementation improves protection in periparturient ewes. *Vet Parasitol* 264:52–57
- Teixeira M, Matos AFIM, Albuquerque FHMA, Bassetto CC, Smith WD, Monteiro JP (2019) Strategic vaccination of hair sheep against *Haemonchus contortus*. *Parasitol Res* 118:2383
- Amarante AFT, Susin I, Rocha RA, Silva MB, Mendes CQ, Pires AV (2009) Resistance of Santa Ines and crossbred ewes to naturally acquired gastrointestinal nematode infections. *Vet Parasitol* 165:273–280
- Shakya KP, Miller JE, Lomax LG, Burnett DD (2011) Evaluation of immune response to artificial infections of *Haemonchus contortus* in Gulf Coast Native compared with Suffolk lambs. *Vet Parasitol* 181:239–247
- Jacobs JR, Sommers KN, Zajac AM, Notter DR, Bowdridge SA (2016) Early IL-4 gene expression in abomasum is associated with resistance to *Haemonchus contortus* in hair and wool sheep breeds. *Parasite Immunol* 38:333–339
- Bowdridge SA, Zajac AM, Notter DR (2015) St. Croix sheep produce a rapid and greater cellular immune response contributing to reduced establishment of *Haemonchus contortus*. *Vet Parasitol* 208:204–210
- Guo Z, González JF, Hernandez JN, McNeilly TN, Corripio-Miyar Y, Frew D, Morrison T, Lu P, Li RW (2016) Possible mechanisms of host resistance to *Haemonchus contortus* infection in sheep breeds native to the Canary Islands. *Sci Rep* 6:26200
- Albers GAA, Gray GD, Piper LR, Barker JSF, Le Jambre LF, Barger IA (1987) The genetics of resistance and resilience to *Haemonchus contortus* in young Merino sheep. *Int J Parasitol* 17:1355–1363
- de la Chevrotière C, Bambou JC, Arquet R, Jacquet P, Mandonnet N (2012) Genetic analysis of the potential role of IgA and IgE responses against *Haemonchus contortus* in parasite resistance of Creole goats. *Vet Parasitol* 186:337–343
- Maizels RM, Balic A, Gomez-Escobar N, Nair M, Taylor MD, Allen JE (2004) Helminth parasites—master of regulation. *Immunol Rev* 201:89–116

25. Balic A, Bowles VM, Meeusen ENT (2000) Cellular profiles in the abomasal mucosa and lymph node during primary infection with *Haemonchus contortus* in sheep. *Vet Immunol Immunopathol* 75:109–120
26. Amarante AFT, Bricarello PA, Rocha RA, Gennari SM (2004) Resistance of Santa Ines, Suffolk and Ile de France sheep to naturally acquired gastrointestinal nematode infections. *Vet Parasitol* 120:91–106
27. Terefe G, Lacroux C, Andreoletti O, Grisez C, Prevot F, Bergeaud JP, Penicaud J, Rouillon V, Gruner L, Brunel JC, Francois D, Bouix J, Dorchies P, Jacquet P (2007) Immune response to *Haemonchus contortus* infection in susceptible (INRA 401) and resistant (Barbados Black Belly) breeds of lambs. *Parasite Immunol* 29:415–424
28. Gossner A, Wilkie H, Joshi A, Hopkins J (2013) Exploring the abomasal lymph node transcriptome for genes associated with resistance to the sheep nematode *Teladorsagia circumcincta*. *Vet Res* 44:68
29. Gerbe F, Sidot E, Smyth DJ, Ohmoto M, Matsumoto I, Dardalhon V, Cesses P, Garnier L, Pouzolles M, Brulin B, Bruschi M, Harcus Y, Zimmermann VS, Taylor N, Maizels RM, Jay P (2016) Intestinal epithelial tuft cells initiate type 2 mucosal immunity to helminth parasites. *Nature* 529:226–230
30. von Moltke J, Ji M, Liang HE, Locksley RM (2016) Tuft-cell-derived IL-25 regulates an intestinal ILC2-epithelial response circuit. *Nature* 529:221–225
31. Rocha RA, Bricarello PA, Silva MB, Houdijk JGM, Almeida FA, Cardia DFF, Amarante AFT (2011) Influence of protein supplementation during late pregnancy and lactation on the resistance of Santa Ines and Ile de France ewes to *Haemonchus contortus*. *Vet Parasitol* 181:229–238
32. Van Wyk JA, Malan FS, Bath GF (1997) Rampant anthelmintic resistance in sheep in South Africa - What are the options? In: 16th International conference of the W.A.A.P., workshop on managing anthelmintic resistance in endoparasites. Sun City, August 1997, veterinary parasitology, pp 51–63
33. Ueno H, Gonçalves PC (1998) Manual para diagnóstico das helmintoses de ruminantes. Jpn Int Coop Agency, Tokyo
34. Amarante AFT (2015) Os parasitas de ovinos. Editora Unesp, São Paulo
35. Dawkins HJS, Windon RG, Eaglesons GK (1989) Eosinophil responses in sheep selected for high and low responsiveness to *Trichostrongylus colubriformis*. *Int J Parasitol* 19:199–205
36. Silva BF, Bassetto CC, Amarante AFT (2012) Immune responses in sheep naturally infected with *Oestrus ovis* (Diptera: Oestridae) and gastrointestinal nematodes. *Vet Parasitol* 190:120–126
37. Santos MC, Xavier JK, Amarante MRV, Bassetto CC, Amarante AFT (2014) Immune response to *Haemonchus contortus* and *Haemonchus placei* in sheep and its role on parasite specificity. *Vet Parasitol* 203:127–138
38. Kanobana K, Vervelde L, Van Der Veer M, Eysker M, Ploeger HW (2001) Characterisation of host responder types after a single *Cooperia oncophora* infection: kinetics of the systemic immune response. *Parasite Immunol* 23:641–653
39. Rocha RA, Amarante AFT, Bricarello PA (2004) Comparison of the susceptibility of Santa Inês and Ile de France ewes to nematode parasitism around parturition and during lactation. *Small Rumin Res* 55:65–75
40. González JF, Hernández A, Meeusen ENT, Rodríguez F, Molina JM, Jaber JR, Raadsma HW, Piedrafita D (2011) Fecundity in adult *Haemonchus contortus* parasites is correlated with abomasal tissue eosinophils and $\gamma\delta$ T cells in resistant Canaria Hair Breed sheep. *Vet Parasitol* 178:286–292
41. Hayward AD (2013) Causes and consequences of intra- and inter-host heterogeneity in defence against nematodes. *Parasite Immunol* 35:362–373
42. Rocha RA, Amarante AFT, Bricarello PA (2005) Resistance of Santa Ines and Ile de France suckling lambs to gastrointestinal nematode infections. *Brazil J Vet Parasitol* 14:17–20
43. Amarante AFT, Bricarello PA, Huntley JF, Mazzolin LP, Gomes JC (2005) Relationship of abomasal histology and parasite-specific immunoglobulin A with the resistance to *Haemonchus contortus* infection in three breeds of sheep. *Vet Parasitol* 128:99–107
44. Taylor MD, van der Werf N, Maizels RM (2012) T cells in helminth infection: the regulators and the regulated. *Trends Immunol* 33:181–189
45. Moreau E, Chauvin A (2010) Immunity against helminths: interactions with the Host and the Intercurrent Infections. *J Biomed Biotechnol* 2010:428593
46. Bendixsen T, Windon RG, Huntley JF, MacKellar A, Davey RJ, McClure SJ, Emery DL (2004) Development of a new monoclonal antibody to ovine chimeric IgE and its detection of systemic and local IgE antibody responses to the intestinal nematode *Trichostrongylus colubriformis*. *Vet Immunol Immunopathol* 97:11–24
47. Lacroux C, Nguyen THC, Andreoletti O, Prevot F, Grisez C, Bergeaud JP, Gruner L, Brunel JC, Francois D, Dorchies P, Jacquet P (2006) *Haemonchus contortus* (Nematoda: Trichostrongylidae) infection in lambs elicits an unequivocal Th2 immune response. *Vet Res* 37:607–622
48. Hernandez JN, Hernández A, Stear MJ, Conde-Felipe M, Rodríguez E, Piedrafita D, González JF (2016) Potential role for mucosal IgA in modulating *Haemonchus contortus* adult worm infection in sheep. *Vet Parasitol* 223:153–158
49. Travers J, Rothenberg ME (2015) Eosinophils in mucosal immune responses. *Mucosal Immunol* 8:464–475
50. Meeusen ENT, Balic A (2000) Do eosinophils have a role in the killing of helminth parasites? *Parasitol Today* 16:95–101
51. Muñoz-Caro T, Rubio RMC, Silva LM, Magdowski G, Gärtner U, McNeilly TN, Taubert A, Hermosilla C (2015) Leucocyte-derived extracellular trap formation significantly contributes to *Haemonchus contortus* larval entrapment. *Parasit Vectors* 8:607
52. Shin MH, Lee YA, Min DY (2009) Eosinophil-mediated tissue inflammatory responses in helminth infection. *Korean J Parasitol* 47:S125–S131
53. Klion A (2017) Recent advances in understanding eosinophil biology. *F1000Res* 6:1084
54. Huntley JF, Newlands GF, Jackson F, Miller HR (1992) The influence of challenge dose, duration of immunity, or steroid treatment on mucosal mast cells and on the distribution of sheep mast cell proteinase in *Haemonchus*-infected sheep. *Parasite Immunol* 14:429–440
55. Stear MJ, Murray M (1994) Genetic resistance to parasitic disease: particularly of resistance in ruminants to gastrointestinal nematodes. *Vet Parasitol* 54:161–176
56. McRae KM, Stear MJ, Good B, Keane OM (2015) Mast cells in the development of adaptive immune responses. *Parasite Immunol* 37:605–613
57. Toniato E, Frydas I, Robuffo I, Ronconi G, Caraffa A, Kritas SK, Conti P (2017) Activation and inhibition of adaptive immune response mediated by mast cells. *J Biol Reg Homeos Ag* 31:543–548
58. Stankiewicz M, Jonas WE, Douch PCG, Rabel B, Bisset S, Cabaj W (1993) Globule leukocytes in the lumen of the small intestine and the resistance status of sheep infected with parasitic nematodes. *J Parasitol* 79:940–945
59. Zaph C, Troy AE, Taylor BC, Berman-Booty LD, Guild KJ, Du Y, Yost EA, Gruber AD, May MJ, Greten FR, Eckmann L, Karin M, Artis D (2007) Epithelial-cell-intrinsic IKK- β expression regulates intestinal immune homeostasis. *Nature* 446:552–556
60. Gerbe F, Legraverend C, Jay P (2012) The intestinal epithelium tuft cells: specification and function. *Cell Mol Life Sci* 69:2907–2917
61. Smith KA, Loser S, Varyani F, Harcus Y, McSorley HJ, McKenzie ANJ, Maizels RM (2018) Concerted IL-25R and IL-4Ra signaling drive innate type 2 effector immunity for optimal helminth expulsion. *eLife* 7:e38269
62. Ting HA, von Moltke J (2019) The immune function of tuft cells at gut mucosal surfaces and beyond. *J Immunol* 202:1321–1329

Publisher's Note

Springer Nature remains neutral with regard to jurisdictional claims in published maps and institutional affiliations.