

REVIEW

Open Access

Epidemiology, molecular virology and diagnostics of Schmallenberg virus, an emerging orthobunyavirus in Europe

Virginie Doceul^{1*}, Estelle Lara¹, Corinne Sailleau¹, Guillaume Belbis², Jennifer Richardson¹, Emmanuel Bréard¹, Cyril Viarouge¹, Morgane Dominguez³, Pascal Hendriks³, Didier Calavas⁴, Alexandra Desprat¹, Jérôme Languille⁵, Loïc Comtet⁶, Philippe Pourquier⁶, Jean-François Eléouët⁷, Bernard Delmas⁷, Philippe Marianneau⁸, Damien Vitour¹ and Stéphan Zientara¹

Abstract

After the unexpected emergence of Bluetongue virus serotype 8 (BTV-8) in northern Europe in 2006, another arbovirus, Schmallenberg virus (SBV), emerged in Europe in 2011 causing a new economically important disease in ruminants. The virus, belonging to the *Orthobunyavirus* genus in the *Bunyaviridae* family, was first detected in Germany, in The Netherlands and in Belgium in 2011 and soon after in the United Kingdom, France, Italy, Luxembourg, Spain, Denmark and Switzerland. This review describes the current knowledge on the emergence, epidemiology, clinical signs, molecular virology and diagnosis of SBV infection.

Table of contents

1. Introduction
2. Timeline of SBV infection in Europe
3. Molecular virology
 - 3.1. Genome and structure
 - 3.2. Life cycle
 - 3.3. Pathogenicity
 - 3.4. Phylogeny
4. Clinical signs
5. Transmission
6. Origin
7. Diagnosis
8. Surveillance
9. Seroprevalence
10. Impact
11. Prevention
12. Conclusions
13. Competing interests
14. Author's contributions
15. Acknowledgements
16. References

1. Introduction

At the end of the summer and in the autumn 2011, hyperthermia and drop in milk production were reported in adult dairy cows in north-west Germany and The Netherlands [1]. In some cases, transient diarrhoea was also recorded in the Netherlands [2]. Some of the symptoms observed were similar to the disease caused by Bluetongue virus (BTV) and a re-emergence of this virus that led to a major epizooty in 2006–2008 in Europe was feared. Surprisingly, no known bovine pathogen was identified in samples from symptomatic cattle [3–5]. In November 2011, the Friedrich-Loëffler Institute (FLI) in Germany detected viral RNA belonging to a new virus in a pool of blood samples from clinically affected dairy cows using a metagenomic approach [3]. This new virus was called Schmallenberg virus (SBV) after the place of origin of the collected samples. Analysis of viral genomic sequences revealed similarities with Akabane, Aino and Shamonda viruses, all belonging to the *Orthobunyavirus* genus from the *Bunyaviridae* family. Douglas, Sathuperi and Shamonda viruses were later identified as closer relatives of SBV [6]. A specific real-time quantitative reverse transcription PCR (RT-qPCR) was then developed by FLI to detect the SBV genome and the protocol shared with many European partners. The

* Correspondence: vdoceul@vet-alfort.fr

¹ANSES-INRA-ENVA, UMR 1161 Virologie, 23 avenue du Général De Gaulle, Maisons-Alfort 94704, France

Full list of author information is available at the end of the article

inoculation of 9-month old calves with blood of cattle that were RT-qPCR positive for SBV or with the virus isolated in *Culicoides variipennis* larvae cells (KC cells) caused fever and mucous diarrhoea, providing experimental evidence that SBV might be responsible for the clinical signs observed [3].

This paper reviews current knowledge on the emergence, molecular virology, clinical signs, diagnosis and seroprevalence of SBV and is based on data published up to the end of January 2013 in peer-reviewed journals, internet-based reporting systems such as the Program for Monitoring Emerging Diseases (proMED-mail), communications from research institutes and official reports from governmental and European institutions such as the European Food and Safety Authority (EFSA).

2. Timeline of SBV infection in Europe

SBV was first detected in Germany and The Netherlands in 2011 [3]. In December 2011, The Netherlands reported a teratogenic effect of SBV in sheep with the birth of malformed lambs with crooked neck, hydrocephalus and stiff joints [2]. The presence of SBV was then reported in Belgium at the end of December 2011 and in the United Kingdom on the 22nd of January 2012. France reported its first case of SBV on the 25th of January 2012 after the virus genome was detected by RT-qPCR in brain samples from malformed lambs born on farms located in the territorial divisions of "Moselle" and "Meurthe et Moselle" in north-eastern France [7]. The presence of SBV was then reported in Luxembourg on the 16th of February [8]. On the 17th of February, SBV was confirmed in a malformed goat in north-east Italy [8] and on the 12th of March, in Spain (Andalusia), in a newborn lamb [9].

By the end of April 2012, SBV had been detected in 3628 herds in Europe [10]. SBV-infected holdings recorded up to this date corresponded to infections occurring in 2011. In May 2012, acute SBV infections were detected in cattle in south west France in the Pyrénées-Atlantiques territorial division [11], indicating that SBV was able to re-circulate after the winter period. Similar conclusions were also made after the detection of the virus in the United Kingdom in newborn lambs born in May and June 2012 [12,13] and in Germany in cattle, sheep and goat holdings sampled in 2012 [14].

Early 2012, the development of assays to detect anti-SBV antibodies, as discussed later in this review, provided a useful tool to show evidence of SBV infection since viraemia is transient [3,15].

On the 5th of June, Denmark reported the presence of antibodies against SBV in two cattle from southern Jutland [16] and on the 20th of July, Switzerland confirmed its first cases of acute SBV infection in cows from two farms in the canton of Berne [17].

By August 2012, more than 5500 cases of SBV infection in ruminants had been recorded across northern Europe [18].

In mid-September, anti-SBV antibodies were detected in Austria in cattle and sheep [19]. At the beginning of October 2012, the presence of antibodies to SBV was reported in western Poland in goats that were sampled at the end of July 2012 [20,21] and in Sweden in cows [22]. In mid-October, anti-SBV antibodies were detected in northern Scotland in a tup and in two cows from Finland that were sampled at the end of September 2012 [23]. Further studies suggested that the virus had spread to South Finland during the summer and early autumn of 2012 [24]. At the end of October 2012, the presence of SBV was detected in Ireland in a bovine foetus [25,26] and a few days later, in Northern Ireland in a malformed calf [27,28].

By the end of October 2012, SBV infection was confirmed by RT-qPCR and/or serology in approximately 6000 holdings in Europe [29].

In November 2012, antibodies against the virus were detected in milk from cattle herds in Norway [30] and an outbreak of SBV was reported in Italy (Sardinia) in a sheep flock with cases of abortion and foetal malformations [31]. At the end of December 2012, SBV was detected for the first time in the Czech Republic following the birth of malformed lambs [32]. In mid-January 2013, the first cases of SBV were confirmed in Estonia in sheep fetuses [33] and at the end of January the presence of SBV was confirmed in sheep in Slovenia [34].

All these reports show that SBV has spread rapidly in vast parts of Europe.

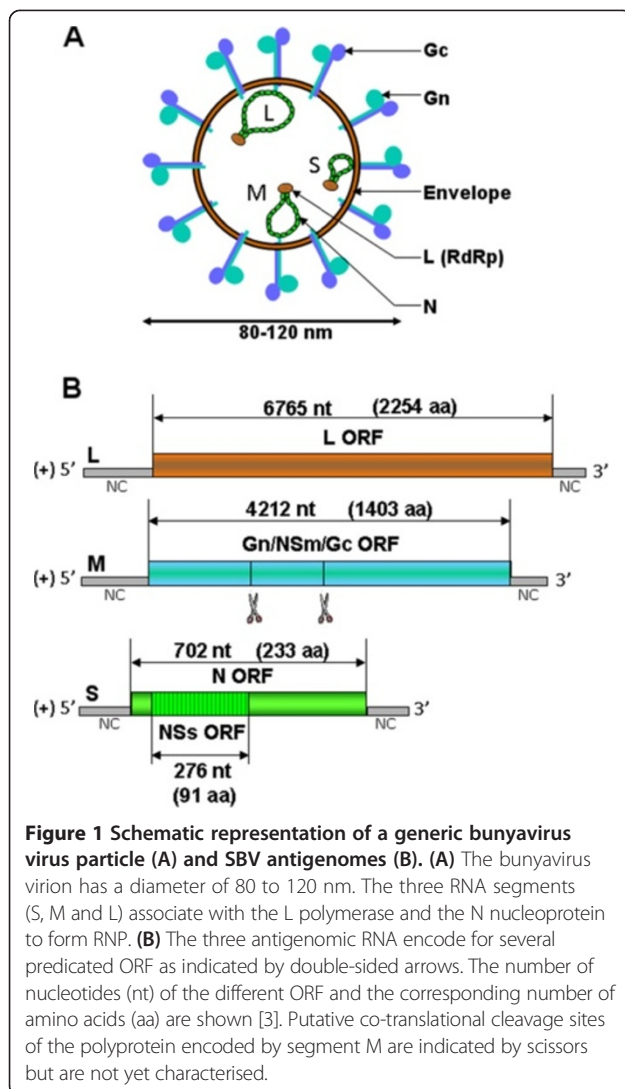
3. Molecular virology

Analysis of viral sequences has led to the classification of SBV in the *Bunyaviridae* family and the *Orthobunyavirus* genus. The *Bunyaviridae* family is composed of 350 viruses that are divided into 5 genera: *Orthobunyavirus*, *Hantavirus*, *Nairovirus*, *Phlebovirus* and *Tospovirus*. Viruses from this family infect vertebrates with the exception of tospoviruses that are plant viruses. Viruses such as Rift Valley fever virus (*Phlebovirus*), Akabane virus (*Orthobunyavirus*) and Nairobi sheep disease virus (*Nairovirus*) are important pathogens in veterinary medicine. Other viruses, such as hantaviruses responsible for hemorrhagic fever with renal syndrome and cardio-pulmonary syndrome or Crimean-Congo hemorrhagic fever virus (*Nairovirus*), can cause serious disease in humans. The *Orthobunyavirus* genus is composed of more than 170 viruses divided into 18 serogroups. SBV belongs to the Simbu serogroup that also includes Simbu virus, Oropouche virus, Akabane virus, Douglas virus, Sathuperi virus, Aino virus, Shamonda virus, Peaton virus and many others.

3.1. Genome and structure

The bunyavirus genome consists of 3 segments of negative-sense single-stranded RNA: the L (large), M (medium) and S (small) segments [35] (Figure 1A). Phleboviruses and tospoviruses differ from other bunyaviruses since their S segment adopts an ambisense coding strategy. The L segment encodes the RNA-dependent RNA polymerase (RdRp) L (or L protein), the M segment encodes a precursor polyprotein that is co-translationally cleaved into the envelope glycoproteins Gn and Gc and the non-structural protein NSm and the S segment encodes the nucleoprotein N and the non-structural protein NSs in an overlapping open reading frame. The three segments of the SBV genome have been fully sequenced [3,36] but its structure and the different encoded proteins are not yet well-characterised and can only be predicated from the data available on related viruses (Figure 1B).

Virions from bunyaviruses are enveloped, spherical and have a diameter of approximately 80 to 120 nm.



They acquire their membrane when budding at the Golgi apparatus lumen [37-39]. Electron microscopy performed at the FLI confirmed that, similarly to other bunyaviruses, the SBV virus particle has a diameter of approximately 100 nm and is membrane-enveloped [40]. Virus particles of bunyaviruses are constituted of 4 structural proteins: the two surface glycoproteins Gn and Gc and the viral polymerase complex composed of the polymerase L protein and the nucleoprotein N. This complex is responsible for the transcription and replication of the viruses that occur exclusively in the cytoplasm. Inside the virus particle, the viral genome is present as a ribonucleoprotein (RNP) associated with many copies of the nucleoprotein N and a few copies of the polymerase L.

3.2. Life cycle

Since SBV was discovered recently, very little is known on its life cycle and knowledge accumulated on other bunyaviruses can only be discussed.

The replication cycle of bunyaviruses is exclusively cytoplasmic. It begins with the recognition of the cellular receptor, unknown for the majority of bunyaviruses, by the Gn/Gc heterodimers present at the surface of the virion membrane [41,42]. Virions enter the cell via endocytosis. Change of pH in vesicles induces conformational modifications of the viral glycoproteins and the exposure of the Gc fusion peptide [43]. The viral envelope fuses with the membranes of the endosomes and the RNP are released inside the cytoplasm. The primary transcription can start and produce viral mRNA via a mechanism of catch-snatching [44]. The L protein cleaves a sequence of 10 to 18 nucleotides from the 5' end of capped mature cellular mRNA to use it as a primer for the initiation of viral transcription. Viral mRNA are synthesised and translation by host cell ribosomes leads to the production of viral proteins. The L and N proteins are needed for replication of the viral genome and the glycoproteins Gn and Gc form heterodimer complexes in the endoplasmic reticulum. Both glycoproteins are then transported to the Golgi apparatus via a Golgi-retention signal, located on Gn for most bunyaviruses, where their glycosylation is completed [45].

Assembly of bunyaviruses is thought to occur mostly in tubular virus factories containing both cellular and viral components situated around the Golgi complex [37,46,47]. From free nucleotides, the viral L polymerase produces complementary copies of the whole viral genome called antigenomes that are also present as RNP and are needed for the production of high quantities of viral genomes. Newly-formed genome RNP then accumulate in the Golgi complex where they directly interact with the C-terminal domains of the glycoproteins Gn and Gc [48-51]. Maturation of viral particles occurs via budding through the modified membrane of the Golgi

apparatus. For orthobunyaviruses, these steps depend on the NSm protein that is associated with the Golgi apparatus via three transmembrane domains [52,53]. Mature virus particles are then transported in vesicles to the plasma membrane where they are released in the extracellular compartment by exocytosis. Further morphological changes then occur resulting in the release of fully infectious extracellular virus particles.

3.3. Pathogenicity

The pathogenicity of orthobunyaviruses is dependent on multiple viral factors encoded by the three genomic segments. For example, the neuroinvasive ability of La Crosse virus, another orthobunyavirus from the California serogroup, is determined by the polymerase and/or the glycoproteins whereas the host immune response is inhibited by NSs that antagonises the expression of type I interferon (IFN-I) and the transcription mediated by RNA polymerase II [54-59]. NSs from Bunyamwera (Bunyamwera serogroup), the prototype virus for the *Orthobunyavirus* genus and the *Bunyaviridae* family, also contributes to viral pathogenesis and seems to be a major virulence factor. This non-structural protein inhibits protein synthesis and the host cell antiviral response by interfering with RNA polymerase II-dependent transcription, IFN-I production and apoptosis mediated by IRF-3 [60-65].

Although there is no conservation of sequence, NSs from other bunyaviruses are also involved in pathogenesis and inhibition of the host cell antiviral response. For example, NSs from Rift Valley fever virus suppresses host transcription by interfering with the subunits of the transcription factor II H (TFIIH) complex, degrades dsRNA-activated protein kinase (PKR) and represses the activation of the promoter IFN- β via its association with a subunit of the Sin3A repressor complex [66-70].

However, little is known about the viral factors involved in the pathogenicity of viruses involved in veterinary medicine, such as Akabane virus, Shamonda virus and SBV. Recently, it was shown that IFN-I receptor (IFNAR) knock-out mice [71] are susceptible to SBV infection and can develop fatal disease as previously reported for La Crosse virus [72] and that intracerebral injection of SBV is lethal for NIH-Swiss mice [36]. Moreover, a study has suggested that infectious serum from cattle is more suitable for standardised SBV infection model than culture-grown virus [73]. These models could be useful in the future to study SBV pathogenesis and contribute to the design of vaccines. Reverse genetic systems have also been developed for SBV and provide a powerful tool to characterise the virus [36,74]. Recombinant viruses lacking NSs have already been generated to study the role of the viral protein as a virulence factor. It was subsequently shown that

NSs is not essential for the virus to replicate in vitro [36,74] but a virus lacking the viral protein is attenuated in newborn mice [36]. NSs was found to block protein synthesis [74] and to interfere with the production of IFN [36,74] suggesting that, similarly to other bunyaviruses, NSs of SBV is able to modulate the host innate immune response.

3.4. Phylogeny

Initial phylogenetic analysis of the SBV genomic segments indicated that SBV displays 69% identity with Akabane virus for the L segment, 71% identity with Aino virus for the M segment and 97% identity with Shamonda virus for the S segment [3]. After analysis of additional sequence data, it was reported that the M segment of the Sathuperi and Douglas orthobunyaviruses display higher identity with SBV whereas the S and L segments are closer to the Shamonda virus [75]. All these viruses belong to the Simbu serogroup, although no cross-protection has been reported between them. All together, these studies suggested that the 3 genomic segments of SBV could be the result of a reassortment between the segment M of the Sathuperi virus and segments S and L of the Shamonda virus. Nevertheless, another group has recently determined the almost full-genome sequences of 9 viruses from the Simbu serogroups belonging to five species (i.e. species *Shamonda virus* (Shamonda virus, Peaton virus and Sango virus), species *Sathuperi virus* (Douglas virus and Sathuperi virus), species *Shuni virus* (Aino virus and Shuni virus), species *Akabane virus* (Sabo virus) and species *Simbu virus* (Simbu virus)) [6]. Phylogenetic analysis of all of these sequences has shown that SBV belongs to the *Sathuperi virus* species. This conclusion is also supported by a serological investigation showing that Douglas and Sathuperi viruses, but not Shamonda virus, are neutralised by anti-SBV serum [6]. In this study, it was also suggested that SBV is an ancestor of Shamonda virus, the latter being a reassortant containing the S and L genomic segments from SBV and the M segment from an unclassified virus.

4. Clinical signs

Sheep and goats seem to be very mildly affected by SBV infection. Symptoms are more apparent in adult cows, and include loss of appetite, hyperthermia and diarrhoea, which can lead to a 50% reduction in milk production [76-78]. Symptoms usually disappear within a few days. The viraemia induced by SBV is short-lived, lasting for 2 to 6 days in cattle [3,78].

In December 2011, The Netherlands reported a teratogenic effect of SBV in sheep with manifestations comparable to those observed for Akabane and Aino viruses [79-82]. Infected females are able to transmit the virus to foetuses (ovine, caprine and bovine), which developed atypical

malformations leading most frequently to intra-uterine death or death immediately after birth. Common congenital malformations and clinical signs in aborted and stillborn animals include a neuro-musculo-skeletal disorder called arthrogryposis, severe torticollis, ankylosis, kyphosis, lordosis scoliosis, brachygnathia inferior and neurological disorders such as amaurosis, ataxia and/or behavioral abnormalities ("dummy syndrome" as observed during the epizooty caused by BTV serotype 8 (BTV-8) [83-85] (Figure 2).

In case of twin gestation, one twin can suffer from arthrogryposis and the other from neurological disorders. One twin can also be born malformed and the other one viable or only affected by a delayed growth.

Newborns suffer from severe neurological disorders that generally lead to death of the animal several hours to several days after birth. It was reported that a SBV-positive one-week old calf born at term showed severe central nervous system lesions, severe dysfunctions of the cerebral cortex, basal ganglia and mesencephalon, severe porencephaly or hydranencephaly but no arthrogryposis [86]. Interestingly, the SBV genome was still detectable in the CNS, suggesting that it is able to persist in the infected foetus after birth.

Necropsy has revealed some cases of hydranencephaly (lack of the brain cerebral hemispheres), hydrocephaly, cerebral and cerebellar hypoplasia and porencephaly [84,86-88] (Figure 2).

Histological studies have revealed lymphohistiocytic inflammation in the central nervous system and glial nodules in the mesencephalon and hippocampus in ovine species. Astrogliosis and microgliosis were detected in both calves and lambs and some cases of myofibrillar hypoplasia of skeletal muscles were reported for both species [84]. Histological examination of the brain and spinal cord of a ten-day old SBV RT-qPCR-positive calf has also reported the presence of meningoencephalitis and poliomyelitis [89]. Furthermore, immunohistochemistry and in situ hybridisation methods performed on brain sections have suggested that neurons are the major target for SBV replication in naturally infected newborn lambs and calves [36,88].

In the case of Akabane virus, infection of the foetus occurs between the 28th and 36th day of gestation in sheep, the 30th and 50th day in goats and the 76th and 174th day in bovines [81]. The severity of foetal injury depends on the time of infection during gestation and maximal damage occurs when neuronal tissues are differentiating [78,81,90]. Detection of the SBV genome in brain, blood or spleen samples in malformed aborted or stillborn ruminants, which represent the majority of the diagnosed cases from December 2011 to March 2012 for lambs and March to June 2012 for calves, indicates that infection of the mother occurred during gestation, in autumn 2011 [29]. A study has estimated the

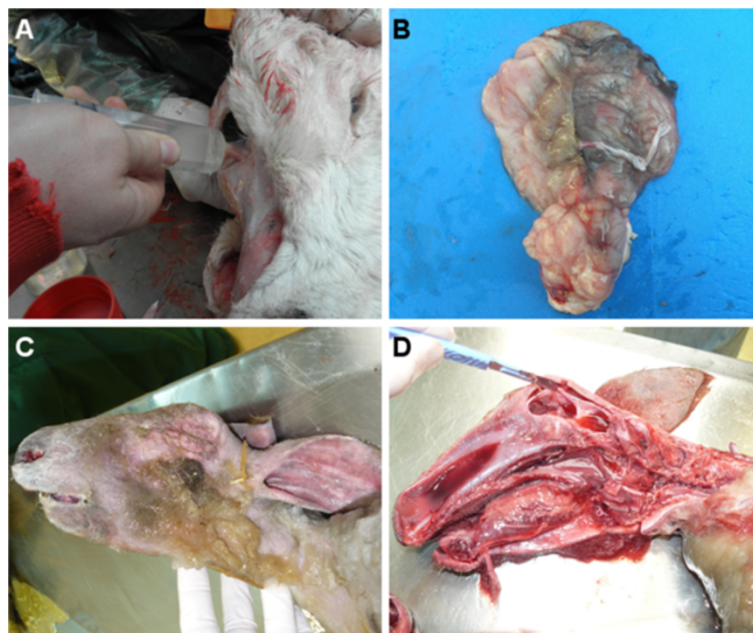


Figure 2 Clinical manifestations of SBV. Necropsy of a three-day-old SBV-positive calf suffering from amaurosis and hydranencephaly (A-B) and a SBV-positive stillborn lamb presenting arthrogryposis and hydrocephaly (C-D). (A) The cerebral hemispheres were replaced by a fluid-filled sac containing 250 mL of cerebrospinal fluid (hydrocephaly) that was removed with a syringe. (B) The cerebral hemispheres were examined after removal of the cerebrospinal fluid. The cerebellum was present but appeared hypoplastic. (C) Brachygnathia was observed in the stillborn lamb. (D) The remaining cerebral hemispheres appeared as a 3 mm thick wall enclosing cerebrospinal fluid. The brainstem was preserved but not the cerebellum.

risk of SBV infection for fetuses born from cows primo-infected after formation of the placenta to 28% [91]. No visible clinical signs are present at birth if in utero infection occurs while the immune system of the foetus is able to control the infection [91].

SBV can infect bison as reported in Germany [92]. The virus is also able to infect wild cervids and llamas but no clinical signs or macroscopic abnormalities were recorded for these species [93,94]. The virus might infect other wild species and domestic animals such as horses or dogs, as reported for viruses belonging to the *Orthobunyavirus* genus. However, SBV infection has not yet been reported in these species. Most of the viruses from the Simbu serogroup are not considered to be zoonotic, with the exception of Oropouche virus, which can infect humans and provoke severe flu-like symptoms. To date, no evidence of SBV infection in humans has been reported and no SBV-neutralising antibodies have been detected in sera from persons (farmers and veterinarians) exposed to the virus [95,96].

5. Transmission

The majority of bunyaviruses are transmitted by arthropod vectors and, in particular, mosquitoes, phlebotoms, culicoides, ticks and thrips, with the exception of hantaviruses which are transmitted by rodents. Studies have shown that viruses within the Simbu serogroup are mostly transmitted by culicoides, but also by mosquitoes from the *Aedes* and *Culex* genus and by several species of ticks [97,98]. Recently, a study has reported the presence of the SBV genome in a pool of culicoides (*C. obsoletus complex*, *C. chiopterus* and *C. dewulfi*) trapped from July to October 2011 in Belgium [99]. Culicoides from the *C. obsoletus* group trapped in Denmark during the same period also contained SBV RNA [100]. Furthermore, SBV RNA was detected in *C. obsoletus complex* and *C. chiopterus* collected in August-September 2011 in the Netherlands where the prevalence of SBV among Culicoides at this period was estimated to be around 0.25% [101]. The virus has also been found in biting midges in Norway, Poland and Sweden [102-104]. These studies suggest that species of culicoides identified as vectors for BTV also act as vectors for the transmission of SBV [105-108]. To date, no studies have been carried out to assess the ability of other arthropods, such as mosquitoes and ticks, to act as vectors for the transmission of SBV.

Cases of acute SBV infection were recorded following the start of the 2012 vector season in France, the United Kingdom, Switzerland, Germany and Italy [11-14,17,29,31]. It is not yet known how SBV is able to persist despite the winter season. It could be the result of the vector population surviving the cold season or the virus persisting in the cattle population or in other reservoirs. It has been reported that some *culicoides* species are present

inside farm buildings during the winter and are able to complete their life cycle in animal enclosures [109,110]. It is then possible that SBV is able to persist from year to year in the vector population despite winter temperatures.

6. Origin

The history and geographical origins of SBV raise numerous questions. As for the introduction of BTV-8 in The Netherlands and Belgium in 2006, the causes of SBV emergence in northern Europe remain unknown. The closest relatives to SBV are Sathuperi, Douglas, Shamonda, Akabane, Aino, Peaton or Sango viruses but, to date, they have not been identified in Europe [111]. These viruses are present in other parts of the world and seem to be able to emerge in regions far from their areas of enzootic distribution. Akabane and Aino viruses are distributed in the Far East and Australia, and Akabane virus has been found recently in Israel and also in Turkey. Similarly, Shamonda virus was detected in Nigeria in the 1960s and has been isolated since only in Japan in 2005 [112]. Although SBV was discovered only recently, there is no doubt that its origins are more ancient and that it might have co-evolved with other closely related viruses. Viruses belonging to the Simbu serogroup have not been well studied and epidemiological data are poor. Nevertheless, phylogenetic analyses based on samples taken in different regions of the world at different periods of time suggest that these viruses evolve slowly. For example, the nucleotide sequences of Japanese strains of the Shamonda virus isolated in 2005 differ by only 3% from those of strains isolated in Nigeria 30 years before [112].

As discussed above, Shamonda virus is thought to be a reassortant containing the S and L genomic segments from SBV and the M segment from an unclassified virus [6]. Such reassortment phenomena have been described previously between viruses of the *Orthobunyavirus* genus [113]. In the Simbu serogroup, it is thought that Peaton virus is derived from an ancestor generated by a reassortment between Akabane and Aino viruses [114] and that a virus circulating in Japan is the product of reassortment between a Japanese strain of the Aino virus and an Australian strain of the Peaton virus [113].

SBV emergence is a reminder that bunyaviruses and particularly orthobunyaviruses are a potential threat for European livestock. Akabane and Aino viruses are already present in the Mediterranean region and might be introduced into Europe. Consequently, the surveillance of livestock and vector populations is critical to monitor the emergence of such viruses in Europe. The identification of the Batai virus, an *Orthobunyavirus* belonging to the Bunyamwera serogroup, in populations of *Anopheles maculipennis* trapped in the south-western part

of Germany in 2009 illustrates the importance of this type of surveillance [115].

It is surprising that SBV has emerged in the same region of Europe as BTV-8 in 2006 and later BTV-6 and -11, and may suggest that the viruses followed the same route of introduction. SBV might have been present before in a region of the world where no and/or rare clinical signs were manifested or reported in the native population. Considering the increase in international trade of animals and products of animal or vegetal origin, it is of no doubt that Europe will face more and more frequently this type of emergence.

7. Diagnosis

Diagnosis of SBV infection relies on the detection of the viral genome by RT-qPCR, as mentioned above. It is a duplex assay that was initially developed by the FLI [3,116]. The technique is based on the simultaneous amplification of a SBV gene and an endogenous gene, β -actin or GAPDH, which is used as an internal positive control (IPC) to ascertain RNA integrity and the absence of PCR inhibitors. Primers amplifying a part of the L gene segment were first used as a template for the detection of the SBV genome. A protocol targeting the S segment was then optimised and showed higher sensitivity [15]. This protocol was implemented in most laboratories in Europe. Brain samples from aborted or stillborn lambs, kids and calves have mainly been used for diagnosis of SBV. Studies have shown that samples from the cerebrum, external placental fluid and the umbilical and spinal cord are suitable for the detection of SBV [116] and that the highest concentration of SBV RNA is found in the brainstem [117,118].

Viral isolation requires the inoculation of Vero (African green monkey kidney epithelial), BHK-21 (baby hamster kidney fibroblast) or KC (*Culicoides variipennis* larvae) cells with brain, serum or blood samples.

Once SBV strains were available, virus neutralisation tests (VNT) and a plaque reduction neutralisation test were developed to detect antibodies present in the serum of infected animals [96,119,120]. These methods are time-consuming (4 to 6 days) and cannot be automated. A diagnostic test that allows serological testing of a large number of samples, not possible by VNT, was needed to diagnose SBV infection and estimate SBV seroprevalence in infected areas. An indirect ELISA test based on a recombinant SBV nucleoprotein antigen produced by ID-VET (Montpellier, F-34070) was designed. This test was validated by the Animal Health laboratory at the French agency for food, environmental and occupational health and safety (ANSES) in Maisons-Alfort (Alfort ANSES laboratory) in April 2012 and currently provides a rapid and less expensive tool for serological diagnosis [121]. A Dutch group has developed an ELISA based on SBV that has

been cultured on partially purified and completely inactivated Vero cells [122]. This assay was shown to be a sensitive test to detect antibodies in foetal or procolostral sera and diagnose SBV in newborn calves and lambs. ELISA tests have also been developed to detect anti-SBV antibodies in milk [123,124].

Interestingly, in a study looking at anti-SBV antibodies in foetal blood samples from calves and lambs, it was shown that 74% of the samples tested positive for SBV infection by ELISA whereas only 27% were SBV-positive by RT-qPCR [122]. Using a VNT assay [121], the Alfort ANSES laboratory also found that from 71 aborted or stillborn animals with malformations evocative of SBV, for which the laboratories had received brain samples and serum samples from their "mothers", 100% of the mother sera were VNT positive whereas only 61.9% (44/71) of the offspring brain samples were SBV-positive by RT-qPCR (unpublished data). These different results suggest that the diagnosis by RT-qPCR might have underestimated the real number of SBV cases. It is possible that the foetus is able to produce neutralising antibodies that will clear the virus. Neutralising antibodies against Akabane virus can be found in foetal and precolostral sera from calves [79,125]. This would explain why, in some cases, aborted or stillborn animals with clinical signs of SBV infection are found RT-qPCR-negative for the virus and the difficulties to isolate the virus. Other explanations would be that the genome of the virus is destroyed after the death of the foetus or during sampling and processing of the samples or that SBV infection is not the cause of the malformations observed.

8. Surveillance

Sharing knowledge and tools has allowed affected and neighbouring regions to efficiently and rapidly monitor the progression of SBV infections in Europe as shown in Figure 3A.

For example, in France, a national passive SBV surveillance system coordinated by the Ministry of Agriculture was launched on the 4th of January 2012 in consultation with the French epidemiological surveillance platform for animal health. Veterinarians were asked to send samples (brain, spleen) from stillborns or malformed ruminant offspring showing clinical signs such as arthrogryposis, torticollis, scoliosis, brachygnathia and/or hydranencephaly. RT-qPCR was performed to detect SBV RNA and virus was isolated using the protocols kindly provided by Dr Martin Beer and Dr Bernd Hoffmann from the FLI, as described above [3,116]. From December 2011 to the beginning of March 2012, the Alfort ANSES laboratory was the laboratory designated by the Ministry of Agriculture to diagnose SBV infection in France. In mid-March 2012, a network of 66 local laboratories was established for SBV testing. This laboratory network is similar to the one established for

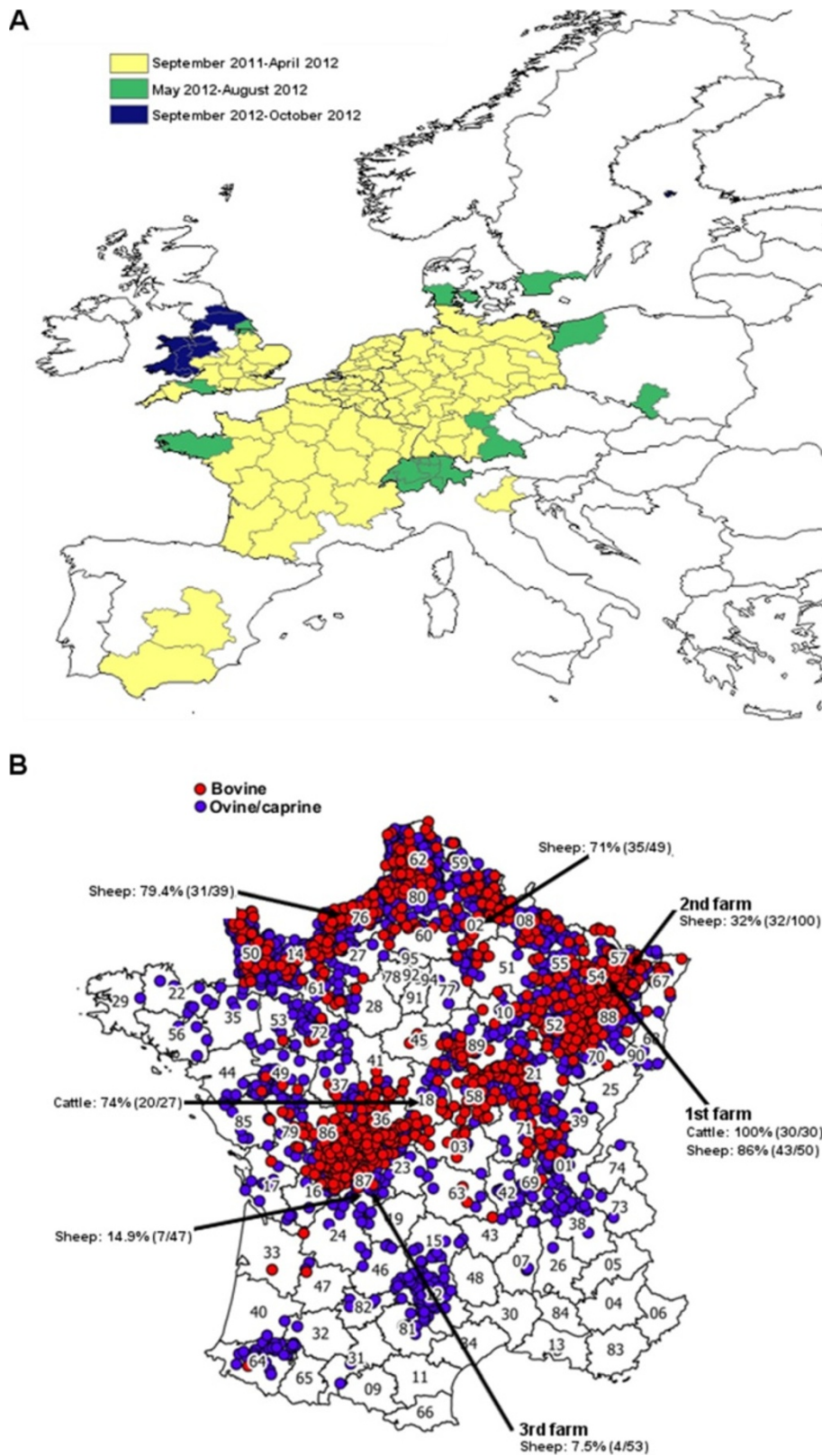


Figure 3 (See legend on next page.)

(See figure on previous page.)

Figure 3 Location of SBV infection in Europe and France. (A) Spread of SBV infection for all ruminants in Europe from September 2011 to October 2012 (source: European Food and Safety Authority [29]). Affected countries reported the location and the time of the first report of confirmed SBV infection. (B) Location of SBV infected farms in France as of August 31, 2012 (source: French Ministry of Agriculture [127]). A total of 3197 farms have been reported to be SBV-infected. The seroprevalence of SBV in several farms from different French territorial divisions (northern regions (02 and 76), eastern region (54 and 57) and central region (18 and 87)) where SBV had been previously detected or neighbouring farms is also shown [132]. The presence of anti-SBV antibodies in cattle or sheep were detected by ELISA and VNT. The first, second and third farms where SBV was detected in France are also indicated.

the detection of the BTV genome by RT-qPCR and has considerably increased the capacity to test samples from suspected animals. This structure allowed the testing of hundreds of thousands of blood samples by RT-qPCR or by ELISA using automats. Thus, the experience gained during the BTV-8 emergence in 2006 [126] has facilitated the rapid development of a laboratory network for SBV diagnosis at a national level. The surveillance measures established by the French government ended on the 31st of May for ovine and caprine ruminants and on the 31st of August for bovines. As of the 31th of August 2012, 3197 SBV infected farms had been reported in France (i.e. in which at least one malformed offspring tested positive for SBV by RT-qPCR), including 1143 sheep farms, 2019 cattle farms and 35 goat farms (Figure 3B). SBV-infected farms are localised mainly in the north-east and the central-west of France [127]. Following the new cases of SBV recorded in different regions of France since the beginning of September 2012, surveillance measures were re-established from the 1st of November 2012 to monitor congenital forms of SBV. They will take into account all cases detected from the 1st of September 2012 [128]. To date, France remains the country with the highest number of SBV-infected farms recorded.

9. Seroprevalence

Serologic investigations are needed to determine seroprevalence in affected and neighbouring regions and monitor the spread of SBV infection. They are also useful to improve modelling predictions and assess the overall impact of SBV. Serological studies were conducted in several European countries following the design of new tools to detect anti-SBV antibodies.

A study investigating the prevalence of antibodies against SBV among dairy cattle in The Netherlands during winter 2011–2012 has reported an estimated seroprevalence of 72.5% [129].

Antibodies against SBV have been detected in 91% of cows sampled within 250 km of the location where SBV emerged in Belgium in February–April 2012 [91]. Additional studies performed in all of Belgium have reported a between-herd and within-herd seroprevalence of 99.76% and 86.3%, respectively in cattle (11 635 cattle from 422 herds sampled between the 2nd of January and the 7th of March 2012) [130]. A between-herd

seroprevalence of 98.03% and a within-herd seroprevalence of 84.31% were also found in sheep (1082 sheep from 83 flocks sampled between the 4th of November 2011 and the 4th of April 2012) and a within-herd seroprevalence of 40.68% was found in goats (142 goats from 8 flocks sampled during the same period) [131]. These reports suggest that most host animals have been in contact with SBV in Belgium.

Preliminary seroprevalence studies were also undertaken by the Alfort ANSES laboratory in farms from different French territorial divisions using ELISA and VNT [132]. A high seroprevalence of SBV in cattle and sheep herds (32 to 100%) was found in northern and eastern regions of France as shown on Figure 3B. SBV seroprevalence seems lower in farms situated in southern parts of France (7.5 to 14.9%). These data are in accordance with the introduction of SBV in France from the north-east part of the country where the first cases were diagnosed. This suggests that, like BTV in 2007, SBV spread from the north-east of France to the rest of the territory. However, more serological studies need to be undertaken to confirm these findings.

The high seroprevalence of SBV found in The Netherlands, Belgium and in several French farms, indicates a widespread exposure to SBV during the biting insect season in 2011. Retrospective and prospective serological studies on ovine, bovine and caprine livestock will help to elucidate the period of SBV introduction in Europe. Similarly, it would be interesting to study the seroprevalence of SBV in wild species to evaluate their involvement as a reservoir of the virus. A study has reported the presence of anti-SBV antibodies in roe and red deer from southern Belgium sampled from October to December 2011 [93]. An average seroprevalence of 43.1% was found in the cervids sampled suggesting that SBV had spread rapidly among wild deer and that wild species could be involved as reservoirs of the virus.

10. Impact

SBV has a low or limited impact on animal health. Reports submitted by different European countries affected by SBV have estimated morbidity and mortality rates of less than 3% [133]. The highest proportion of SBV-confirmed herds in comparison with the total number of herds per region is 6.6% for sheep and 4% for cattle [29]. Nevertheless, it remains difficult to provide an accurate

estimation of the number of herds affected by the virus and to determine the economic impact of the disease on the livestock industry since cases were most likely underreported or underdetected [132,134,135].

Few data are available on the impact of SBV within herds. A preliminary survey investigating the impact of SBV infection in sheep flocks in France has been conducted recently. This study showed that in SBV RT-qPCR-positive flocks, an average of 85% lambs were healthy while 13% were born dead or died rapidly after birth and 2% were born with malformations but survived for more than 12 h (data from 363 flocks and 64 548 lambs) [136]. However, the clinical impact was very variable between flocks. This might be due to differences in the proportion of ewes at a susceptible stage of pregnancy at the time of exposure to SBV.

11. Prevention

Considering SBV has a limited impact on animal health, trade restrictions have not been advised and are regarded as unjustified by the European Union (EU) and the World Organisation for Animal Health (OIE) [137]. SBV is transmitted by a vector that is widespread within Europe and movement bans would be ineffective. However, many countries outside the EU have imposed restrictions on the import of live animals and products from the EU such as semen and embryos. Recently, SBV RNA has been detected in the semen of naturally infected bulls and SBV infection was reported in calves inoculated experimentally with SBV RT-qPCR-positive semen [138-140]. These findings show that the semen of bulls naturally infected with SBV can be infectious and suggest that SBV and Akabane virus differ in terms of semen contamination since a group has reported previously that the semen from bulls infected experimentally with Akabane virus is not infectious [141]. The export of semen from countries where SBV is present might represent a risk of contamination. It is then essential to develop a sensitive test for the detection of SBV RNA in semen and to perform further studies to determine the risk of transmission of SBV via this route and the impact of the virus on fertility.

Vaccination is a preventive measure that could reduce the impact of SBV [142]. The development of vaccines is in progress and a vaccine should be available commercially in the future [30,143]. Nevertheless, the cost of vaccination for the livestock industry might not be justified since SBV seems to be a low impact disease. Vaccines have been developed against Akabane disease but management of outbreaks relies mainly on the sentinel monitoring of vectors and cattle [142,144,145].

12. Conclusions

The emergence of SBV at the end of 2011 in Europe is a reminder that the introduction of new diseases remains

a threat for European countries. The rapid response to the emergence of SBV established by affected European countries has shown that an efficient network of laboratories is in place to face the emergence of new animal viruses. SBV was able to re-circulate after the winter season and is still circulating in Europe. A certain level of protection exists within the ruminant populations but it is likely that a significant percentage of animals remains susceptible to SBV in areas where no or few cases of SBV have been reported. This suggests that new congenital cases of SBV infection will occur during the winter 2012–2013. Maintaining an efficient surveillance would be essential to further describe the progression of the epidemic and its impact on the breeding industry. More studies are needed to determine the regions in which SBV is present, to understand its geographical and genetic origin and to identify its putative reservoirs. A better understanding of the pathogenesis associated with SBV infection and the ability of SBV antibodies to protect animals against the disease will also be useful to control the disease.

Competing interests

The authors declare that they have no competing interests.

Authors' contributions

VD structured the review and prepared, along with DV, EL and SZ, the draft of the manuscript. CS, GB, EB, JR, CV, MD, PH, DC, AD, JL, LC, PP, JE, BE and PM helped with the French epidemiological, serological and clinical data presented in this paper. All authors read and approved the final manuscript.

Acknowledgments

We kindly thank Anne Touratier for her help with the French seroprevalence study data.

Author details

¹ANSES-INRA-ENVA, UMR 1161 Virologie, 23 avenue du Général De Gaulle, Maisons-Alfort 94704, France. ²Ecole Nationale Vétérinaire d'Alfort, Unité de Pathologie du Bétail, Université Paris-Est, 7 avenue du Général de Gaulle, Maisons-Alfort 94704, France. ³Direction scientifique des laboratoires, Plateforme de surveillance épidémiologique en santé animale, ANSES, 23 avenue du Général De Gaulle, Maisons-Alfort 94704, France. ⁴ANSES-Laboratoire de Lyon, Unité Epidémiologie, 31 avenue Tony Garnier, Lyon cedex 7 69364, France. ⁵Direction Générale de l'Alimentation, Ministère de l'Agriculture, 251 Rue de Vaugirard, Paris Cedex 15 75732, France. ⁶ID VET, 167 rue Mehdi Ben Barka - Zone Garosud, Montpellier F-34070, France. ⁷INRA, Unité de Virologie Immunologie Moléculaires UR892, Jouy-en-Josas F-78350, France. ⁸ANSES-Laboratoire de Lyon, Unité Virologie, 31 avenue Tony Garnier, Lyon cedex 7 69394, France.

Received: 29 November 2012 Accepted: 22 April 2013

Published: 15 May 2013

References

1. ProMed-mail: UNDIAGNOSED ILLNESS, BOVINE - GERMANY, NETHERLANDS (02). NEW IRUS SUSPECTED. <http://www.promedmail.org/direct.php?id=20111119.3404>.
2. ProMed-mail: SCHMALLEMBERG VIRUS - EUROPE (03). NETHERLANDS: CONGENITAL MALFORMATIONS, OVINE, BOVINE. <http://www.promedmail.org/direct.php?id=20111217.3621>.
3. Hoffmann B, Scheuch M, Hoper D, Jungblut R, Holsteg M, Schirmer M, Eschbaumer M, Goller KV, Wernike K, Fischer M, Breithaupt A, Mettenleiter TC, Beer M: Novel orthobunyavirus in Cattle, Europe, 2011. *Emerg Infect Dis* 2012, **18**:469–472.

4. Beer M, Conraths FJ, van der Poel WH: 'Schmallenberg virus' - a novel orthobunyavirus emerging in Europe. *Epidemiol Infect* 2012, **141**:1-8.
5. Conraths F, Peters M, Beer M: Schmallenberg virus, a novel orthobunyavirus infection in ruminants in Europe: potential global impact and preventive measures. *N Z Vet J* 2012, **61**:63-67.
6. Goller KV, Hoper D, Schirmmeier H, Mettenleiter TC, Beer M: Schmallenberg virus as possible ancestor of shamonda virus. *Emerg Infect Dis* 2012, **18**:1644-1646.
7. ProMed-mail: SCHMALLEMBERG VIRUS - EUROPE (12): FRANCE CONFIRMED, UPDATE. <http://www.promedmail.org/direct.php?id=20120128.1025004>.
8. ProMed-mail: SCHMALLEMBERG VIRUS - EUROPE (20). ITALY, LUXE: LUXEMBOURG, OIE. <http://www.promedmail.org/direct.php?id=20120220.1047263>.
9. ProMed-mail: SCHMALLEMBERG VIRUS - EUROPE (28). SPAIN (ANDALUCIA): OIE. <http://www.promedmail.org/direct.php?id=20120314.1070877>.
10. ProMed-mail: SCHMALLEMBERG VIRUS - EUROPE (34): DECLINE, UPDATE. <http://www.promedmail.org/direct.php?id=20120426.1115024>.
11. Sailleau C, Bréard E, Viarouge C, Desprat A, Doceul V, Lara E, Languille J, Vitour D, Attoui H, Zientara S: Acute Schmallenberg virus infections, France, 2012. *Emerg Infect Dis* 2013, **19**:321-322.
12. *Vet Rec*: Schmallenberg virus "still circulating" in the UK. 2012, **171**:140.
13. ProMed-mail: SCHMALLEMBERG VIRUS - EUROPE (49). UK, OVINE: CIRCULATION. 2012. <http://www.promedmail.org/direct.php?id=20120725.1214624>.
14. Conraths F, Kämer D, Teske K, Hoffmann B, Mettenleiter TC, Beer M: Reemerging Schmallenberg virus infections, Germany. *Emerg Infect Dis*. in press.
15. van der Poel WH: Diagnostics for Schmallenberg virus. *Vet Rec* 2012, **171**:294-295.
16. ProMed-mail: SCHMALLEMBERG VIRUS - EUROPE (45). DENMARK: SEROLOGICAL EVIDENCE. <http://www.promedmail.org/direct.php?id=20120605.1157269>.
17. ProMed-mail: SCHMALLEMBERG VIRUS - EUROPE (48). SWITZERLAND: FIRST CASE. <http://www.promedmail.org/direct.php?id=20120721.1210343>.
18. ProMed-mail: SCHMALLEMBERG VIRUS - EUROPE (51): UPDATE, SURVEILLANCE, CLASSIFICATION. <http://www.promedmail.org/direct.php?id=20120806.1230364>.
19. ProMed-mail: SCHMALLEMBERG VIRUS - EUROPE (60). AUSTRIA, UK (WALES), BELGIUM. <http://www.promedmail.org/direct.php?id=20120926.1310236>.
20. ProMed-mail: SCHMALLEMBERG VIRUS - EUROPE (61). POLAND. <http://www.promedmail.org/direct.php?id=20121001.1318740>.
21. Kaba J, Czopowicz M, Witkowski L: Schmallenberg virus antibodies detected in Poland. *Transbound Emerg Dis* 2013, **60**:1-3.
22. ProMed-mail: SCHMALLEMBERG VIRUS - EUROPE (62). SWEDEN (BLEKINGE): POSITIVE SEROLOGY. <http://www.promedmail.org/direct.php?id=20121005.1326266>.
23. ProMed-mail: SCHMALLEMBERG VIRUS - EUROPE (66). FINLAND (ALAND): FIRST POSITIVE SEROLOGY, SCOTLAND ex ENGLAND. <http://www.promedmail.org/direct.php?id=20121017.1349090>.
24. ProMed-mail: SCHMALLEMBERG VIRUS - EUROPE (68). FINLAND (MAINLAND): EUROPE UPDATE. <http://www.promedmail.org/direct.php?id=20121029.1373587>.
25. ProMed-mail: SCHMALLEMBERG VIRUS - EUROPE (69). IRELAND (CORK): FIRST CASE. <http://www.promedmail.org/direct.php?id=20121031.1380923>.
26. Bradshaw B, Mooney J, Ross PJ, Furphy C, O'Donovan J, Sanchez C, Gomez-Parada M, Toolan D: Schmallenberg virus cases identified in Ireland. *Vet Rec* 2012, **171**:540-541.
27. ProMed-mail: SCHMALLEMBERG VIRUS - EUROPE (70). UK (NORTHERN IRELAND) FIRST CASE. <http://www.promedmail.org/direct.php?id=20121102.1387033>.
28. *Vet Rec*: Schmallenberg virus confirmed in Northern Ireland. 2012, **171**:461.
29. European Food Safety Authority: 'Schmallenberg virus': analysis of the epidemiological data (November 2012). Supporting Publications; 2012:22. EN-360. <http://www.efsa.europa.eu/it/search/doc/360e.pdf>.
30. ProMed-mail: SCHMALLEMBERG VIRUS - EUROPE (71). NORWAY, UK, NETHERLANDS. <http://www.promedmail.org/direct.php?id=20121117.1413952>.
31. ProMed-mail: SCHMALLEMBERG VIRUS - EUROPE (72). ITALY (SARDINIA), FRANCE, EU. <http://www.promedmail.org/direct.php?id=20121124.1422556>.
32. ProMed-mail: SCHMALLEMBERG VIRUS - EUROPE (78). CZECH REPUBLIC: OVINE, SUSPECTED, INFORMATION REQUEST. <http://www.promedmail.org/direct.php?id=20121222.1465298>.
33. ProMed-mail: SCHMALLEMBERG VIRUS - EUROPE (05). ESTONIA, SWEDEN, CZECH REPUBLIC: CLINICAL. <http://www.promedmail.org/direct.php?id=20130116.1501701>.
34. ProMed-mail: SCHMALLEMBERG VIRUS - EUROPE (08). SLOVENIA: SUSPECTED, REQUEST FOR INFORMATION, UPDATE. <http://www.promedmail.org/direct.php?id=20130126.1516151>.
35. Bouloy M, Krams-Ozden S, Horodniceanu F, Hannoun C: Three-segment RNA genome of Lumbo virus (Bunyavirus). *Intervirology* 1973, **2**:173-180.
36. Varela M, Schnettler E, Caporale M, Murgia C, Barry G, McFarlane M, McGregor E, Piras IM, Shaw A, Lamm C, Janowicz A, Beer M, Glass M, Herder V, Hahn K, Baumgärtner W, Kohl A, Palmarini M: Schmallenberg virus pathogenesis, tropism and interaction with the innate immune system of the host. *PLoS Pathog* 2013, **9**:e1003133.
37. Kuusimäki E, Hedman K, Saraste J, Pettersson RF: Uukuniemi virus maturation: accumulation of virus particles and viral antigens in the Golgi complex. *Mol Cell Biol* 1982, **2**:1444-1458.
38. Kuusimäki E, Bang B, Hurme M, Pettersson RF: Uukuniemi virus maturation: immunofluorescence microscopy with monoclonal glycoprotein-specific antibodies. *J Virol* 1984, **51**:137-146.
39. Murphy FA, Harrison AK, Whitfield SG: Bunyaviridae: morphologic and morphogenetic similarities of Bunyamwera serologic supergroup viruses and several other arthropod-borne viruses. *Intervirology* 1973, **1**:297-316.
40. Friedrich-Loeffler-Institute: First visualization of Schmallenberg virus. <http://www.fli.bund.de/en/startseite/press-releases/presse-informationsseite/Pressemittteilung/schmallenberg-virus-erstmalig-sichtbar-gemacht.html>.
41. Borucki MK, Kempf BJ, Blitvich BJ, Blair CD, Beaty BJ: La Crosse virus: replication in vertebrate and invertebrate hosts. *Microbes Infect* 2002, **4**:341-350.
42. Elliott RM: Molecular biology of the Bunyaviridae. *J Gen Virol* 1990, **71**:501-522.
43. Plassmeyer ML, Soldan SS, Stachelek KM, Roth SM, Martin-Garcia J, Gonzalez-Scarano F: Mutagenesis of the La Crosse Virus glycoprotein supports a role for Gc (1066-1087) as the fusion peptide. *Virology* 2007, **358**:273-282.
44. Bouloy M, Pardigon N, Vialat P, Gerbaud S, Girard M: Characterization of the 5' and 3' ends of viral messenger RNAs isolated from BHK21 cells infected with Germiston virus (Bunyavirus). *Virology* 1990, **175**:50-58.
45. Walter CT, Barr JN: Recent advances in the molecular and cellular biology of bunyaviruses. *J Gen Virol* 2011, **92**:2467-2484.
46. Kikkert M, Van Lent J, Storms M, Bodegom P, Kormelink R, Goldbach R: Tomato spotted wilt virus particle morphogenesis in plant cells. *J Virol* 1999, **73**:2288-2297.
47. Novoa RR, Calderita G, Cabezas P, Elliott RM, Risco C: Key Golgi factors for structural and functional maturation of bunyamwera virus. *J Virol* 2005, **79**:10852-10863.
48. Hepojoki J, Strandin T, Wang H, Vapalahti O, Vaheri A, Lankinen H: Cytoplasmic tails of hantavirus glycoproteins interact with the nucleocapsid protein. *J Gen Virol* 2010, **91**:2341-2350.
49. Overby AK, Popov VL, Pettersson RF, Neve EP: The cytoplasmic tails of Uukuniemi Virus (Bunyaviridae) G(N) and G(C) glycoproteins are important for intracellular targeting and the budding of virus-like particles. *J Virol* 2007, **81**:11381-11391.
50. Shi X, Kohl A, Li P, Elliott RM: Role of the cytoplasmic tail domains of Bunyamwera orthobunyavirus glycoproteins Gn and Gc in virus assembly and morphogenesis. *J Virol* 2007, **81**:10151-10160.
51. Snippe M, Smeenk L, Goldbach R, Kormelink R: The cytoplasmic domain of tomato spotted wilt virus Gn glycoprotein is required for Golgi localisation and interaction with Gc. *Virology* 2007, **363**:272-279.
52. Shi X, Kohl A, Leonard VH, Li P, McLees A, Elliott RM: Requirement of the N-terminal region of orthobunyavirus nonstructural protein N5m for virus assembly and morphogenesis. *J Virol* 2006, **80**:8089-8099.
53. Fontana J, Lopez-Montero N, Elliott RM, Fernandez JJ, Risco C: The unique architecture of Bunyamwera virus factories around the Golgi complex. *Cell Microbiol* 2008, **10**:2012-2028.
54. Gonzalez-Scarano F, Beaty B, Sundin D, Janssen R, Endres MJ, Nathanson N: Genetic determinants of the virulence and infectivity of La Crosse virus. *Microb Pathog* 1988, **4**:1-7.
55. Janssen R, Gonzalez-Scarano F, Nathanson N: Mechanisms of bunyavirus virulence. Comparative pathogenesis of a virulent strain of La Crosse and an avirulent strain of Tahyna virus. *Lab Invest* 1984, **50**:447-455.
56. Janssen RS, Nathanson N, Endres MJ, Gonzalez-Scarano F: Virulence of La Crosse virus is under polygenic control. *J Virol* 1986, **59**:1-7.
57. Griot C, Gonzalez-Scarano F, Nathanson N: Molecular determinants of the virulence and infectivity of California serogroup bunyaviruses. *Annu Rev Microbiol* 1993, **47**:117-138.

58. Griot C, Pekosz A, Davidson R, Stillmock K, Hoek M, Lukac D, Schmeidler D, Cobbinah I, Gonzalez-Scarano F, Nathanson N: **Replication in cultured C2C12 muscle cells correlates with the neuroinvasiveness of California serogroup bunyaviruses.** *Virology* 1994, **201**:399–403.
59. Endres MJ, Griot C, Gonzalez-Scarano F, Nathanson N: **Neuroattenuation of an avirulent bunyavirus variant maps to the L RNA segment.** *J Virol* 1991, **65**:5465–5470.
60. Bridgen A, Weber F, Fazakerley JK, Elliott RM: **Bunyamwera bunyavirus nonstructural protein NSs is a nonessential gene product that contributes to viral pathogenesis.** *Proc Natl Acad Sci USA* 2001, **98**:664–669.
61. Thomas D, Blakqori G, Wagner V, Banholzer M, Kessler N, Elliott RM, Haller O, Weber F: **Inhibition of RNA polymerase II phosphorylation by a viral interferon antagonist.** *J Biol Chem* 2004, **279**:31471–31477.
62. Weber F, Bridgen A, Fazakerley JK, Streitenfeld H, Kessler N, Randall RE, Elliott RM: **Bunyamwera bunyavirus nonstructural protein NSs counteracts the induction of alpha/beta interferon.** *J Virol* 2002, **76**:7949–7955.
63. Streitenfeld H, Boyd A, Fazakerley JK, Bridgen A, Elliott RM, Weber F: **Activation of PKR by Bunyamwera virus is independent of the viral interferon antagonist NSs.** *J Virol* 2003, **77**:5507–5511.
64. Van Knippenberg I, Carlton-Smith C, Elliott RM: **The N-terminus of Bunyamwera orthobunyavirus NSs protein is essential for interferon antagonism.** *J Gen Virol* 2010, **91**:2002–2006.
65. Kohl A, Clayton RF, Weber F, Bridgen A, Randall RE, Elliott RM: **Bunyamwera virus nonstructural protein NSs counteracts interferon regulatory factor 3-mediated induction of early cell death.** *J Virol* 2003, **77**:7999–8008.
66. Le May N, Dubaele S, De Proietti SL, Billecocq A, Bouloy M, Egly JM: **TFIIH transcription factor, a target for the Rift Valley hemorrhagic fever virus.** *Cell* 2004, **116**:541–550.
67. Kalveram B, Lihoradova O, Ikegami T: **NSs protein of rift valley fever virus promotes posttranslational downregulation of the TFIIH subunit p62.** *J Virol* 2011, **85**:6234–6243.
68. Habjan M, Pichlmair A, Elliott RM, Overby AK, Glatter T, Gstaiger M, Superti-Furga G, Unger H, Weber F: **NSs protein of rift valley fever virus induces the specific degradation of the double-stranded RNA-dependent protein kinase.** *J Virol* 2009, **83**:4365–4375.
69. Ikegami T, Narayanan K, Won S, Kamitani W, Peters CJ, Makino S: **Rift Valley fever virus NSs protein promotes post-transcriptional downregulation of protein kinase PKR and inhibits eIF2alpha phosphorylation.** *PLoS Pathog* 2009, **5**:e1000287.
70. Le May N, Mansuroglu Z, Leger P, Josse T, Blot G, Billecocq A, Flick R, Jacob Y, Bonnefoy E, Bouloy M: **A SAP30 complex inhibits IFN-beta expression in Rift Valley fever virus infected cells.** *PLoS Pathog* 2008, **4**:e13.
71. Wernike K, Breithaupt A, Keller M, Hoffmann B, Beer M, Eschbaumer M: **Schmallenberg virus infection of adult type I interferon receptor knock-out mice.** *PLoS One* 2012, **7**:e40380.
72. Schuh T, Schultz J, Moelling K, Pavlovic J: **DNA-based vaccine against La Crosse virus: protective immune response mediated by neutralizing antibodies and CD4+ T cells.** *Hum Gene Ther* 1999, **10**:1649–1658.
73. Wernike K, Eschbaumer M, Breithaupt A, Hoffmann B, Beer M: **Schmallenberg virus challenge models in cattle: infectious serum or culture-grown virus?** *Vet Res* 2012, **43**:84.
74. Elliott RM, Blakqori G, Van Knippenberg I, Koudriakova E, Li P, McLees A, Shi X, Szemiel AM: **Establishment of a reverse genetics system for Schmallenberg virus, a newly emerged orthobunyavirus in Europe.** *J Gen Virol* 2013, **94**:851–859.
75. Yanase T, Kato T, Aizawa M, Shuto Y, Shirafuji H, Yamakawa M, Tsuda T: **Genetic reassortment between Sathuperi and Shamonda viruses of the genus Orthobunyavirus in nature: implications for their genetic relationship to Schmallenberg virus.** *Arch Virol* 2012, **157**:1611–1616.
76. Muskens J, Smolenaars AJ, van der Poel WH, Mars MH, Van Wuijckhuise L, Holzhauser M, Van Weering H, Kock P: **Diarrhea and loss of production on Dutch dairy farms caused by the Schmallenberg virus.** *Tijdschr Diergeneesk* 2012, **137**:112–115 (in Dutch).
77. Gibbens N: **Schmallenberg virus: a novel viral disease in northern Europe.** *Vet Rec* 2012, **170**:58.
78. Steukers L, Bertels G, Cay AB, Nauwyneck HJ: **Schmallenberg virus: emergence of an Orthobunyavirus among ruminants in Western Europe.** *Vlaams Diergeneeskundig Tijdschrift* 2012, **81**:119–127.
79. Kurogi H, Inaba Y, Goto Y, Miura Y, Takahashi H: **Serologic evidence for etiologic role of Akabane virus in epizootic abortion-arthrogryposis-hydranencephaly in cattle in Japan, 1972–1974.** *Arch Virol* 1975, **47**:71–83.
80. Hashiguchi Y, Nanba K, Kumagai T: **Congenital abnormalities in newborn lambs following Akabane virus infection in pregnant ewes.** *Natl Inst Anim Health Q* 1979, **19**:1–11.
81. Kirkland PD, Barry RD, Harper PA, Zelski RZ: **The development of Akabane virus-induced congenital abnormalities in cattle.** *Vet Rec* 1988, **122**:582–586.
82. Tsuda T, Yoshida K, Ohashi S, Yanase T, Sueyoshi M, Kamimura S, Misumi K, Hamana K, Sakamoto H, Yamakawa M: **Arthrogryposis, hydranencephaly and cerebellar hypoplasia syndrome in neonatal calves resulting from intrauterine infection with Aino virus.** *Vet Res* 2004, **35**:531–538.
83. Williamson SM, Scholes SF, Welchman D de B, Dennison M, Batten CA, Williams DL, Mertens PP, Mellor PS, Darpel KE: **Bluetongue virus serotype 8-associated hydranencephaly in two calves in south-eastern England.** *Vet Rec* 2010, **167**:216–218.
84. Herder V, Wohlsein P, Peters M, Hansmann F, Baumgartner W: **Salient lesions in domestic ruminants infected with the emerging so-called Schmallenberg virus in Germany.** *Vet Pathol* 2012, **49**:588–591.
85. Garigliany MM, Bayrou C, Kleijnen D, Cassart D, Jolly S, Linden A, Desmecht D: **Schmallenberg virus: a new Shamonda/Sathuperi-like virus on the rise in Europe.** *Antiviral Res* 2012, **95**:82–87.
86. Garigliany MM, Hoffmann B, Dive M, Sartelet A, Bayrou C, Cassart D, Beer M, Desmecht D: **Schmallenberg virus in calf born at term with porencephaly, Belgium.** *Emerg Infect Dis* 2012, **18**:1005–1006.
87. van den Brom R, Luttkholt SJ, Lievaart-Peterson K, Peperkamp NH, Mars MH, van der Poel WH, Vellema P: **Epizootic of ovine congenital malformations associated with Schmallenberg virus infection.** *Tijdschr Diergeneesk* 2012, **137**:106–111.
88. Hahn K, Habierski A, Herder V, Wohlsein P, Peters M, Hansmann F, Baumgartner W: **Schmallenberg virus in central nervous system of ruminants.** *Emerg Infect Dis* 2012, **19**:154–155.
89. Peperkamp K, Dijkman R, Van Maanen C, Vos J, Wouda W, Holzhauser M, Van Wuijckhuise L, Junker K, Greijdanus S, Roumen M: **Polioencephalomyelitis in a calf due to infection with Schmallenberg virus.** *Vet Rec* 2012, **170**:570.
90. Parsonson IM, Della-Porta AJ, Snowdon WA: **Congenital abnormalities in newborn lambs after infection of pregnant sheep with Akabane virus.** *Infect Immun* 1977, **15**:254–262.
91. Garigliany MM, Bayrou C, Kleijnen D, Cassart D, Desmecht D: **Schmallenberg virus in domestic cattle, Belgium, 2012.** *Emerg Infect Dis* 2012, **18**:1512–1514.
92. ProMed-mail: **SCHMALLEMBERG VIRUS - EUROPE (10). GERMANY: UPDATE.** <http://www.promedmail.org/direct.php?id=20120124.1020710>.
93. Linden A, Desmecht D, Volpe R, Wirtgen M, Gregoire F, Pirson J, Paternostre J, Kleijnen D, Schirmer H, Beer M, Garigliany MM: **Epizootic spread of Schmallenberg virus among wild cervids, Belgium, Fall 2011.** *Emerg Infect Dis* 2012, **18**:2006–2008.
94. Jack C, Anstaett O, Adams J, Noad R, Brownlie J, Mertens P: **Evidence of seroconversion to SBV in camelids.** *Vet Rec* 2012, **170**:603.
95. Ducomble T, Wilking H, Stark K, Takla A, Askar M, Schaade L, Nitsche A, Kurth A: **Lack of evidence for Schmallenberg virus infection in highly exposed persons, Germany, 2012.** *Emerg Infect Dis* 2012, **18**:1333–1335.
96. Reusken C, van den Wijngaard C, Van Beek P, Beer M, Bouwstra R, Godeke GJ, Isken L, van den Kerkhof H, Van Pelt W, van der Poel W, Reimerink J, Schielen P, Schmidt-Chanasit J, Vellema P, De Vries A, Wouters I, Koopmans M: **Lack of evidence for zoonotic transmission of Schmallenberg virus.** *Emerg Infect Dis* 2012, **18**:1746–1754.
97. Oya A, Okuno T, Ogata T, Kobayashii I, Matsuyama T: **Akabane, a new arbor virus isolated in Japan.** *Jpn J Med Sci Biol* 1961, **14**:101–108.
98. St George TD, Standfast HA, Cybinski DH, Filippich C, Carley JG: **Peaton virus: a new Simbu group arbovirus isolated from cattle and Culicoides brevitarsis in Australia.** *Aust J Biol Sci* 1980, **33**:235–243.
99. De Regge N, Deblauwe I, De Deken R, Vantieghem P, Maddier M, Geysen D, Smeets F, Losson B, van den Berg T, Cay AB: **Detection of Schmallenberg virus in different Culicoides spp. by real-time RT-PCR.** *Transbound Emerg Dis* 2012, **59**:471–475.
100. Rasmussen LD, Kristensen B, Kirkeby C, Rasmussen TB, Belsham GJ, Bodker R, Botner A: **Culicoides as vectors of Schmallenberg virus.** *Emerg Infect Dis* 2012, **18**:1204–1206.
101. Elbers AR, Meiswinkel R, Van Weezep E, Sloet van Oldruitenborgh-Oosterbaan MM, Kooi EA: **Schmallenberg virus in Culicoides spp. biting midges, the Netherlands, 2011.** *Emerg Infect Dis* 2013, **19**:106–109.
102. ProMed-mail: **SCHMALLEMBERG VIRUS - EUROPE (67). NORWAY: VECTOR.** <http://www.promedmail.org/direct.php?id=20121026.1366841>.

103. Larska M, Polak MP, Grochowska M, Lechowski L, Zwiasek JS, Zmudzinski JF: **First report of Schmallenberg virus infection in cattle and midges in Poland.** *Transbound Emerg Dis* 2013, **60**:97–101.
104. ProMed-mail: **SCHMALLEMBERG VIRUS - EUROPE (73). NORWAY, SWEDEN: UPDATE.** <http://www.promedmail.org/direct.php?id=20121128.1428668>.
105. Savini G, Goffredo M, Monaco F, Di Gennaro A, Cafiero MA, Baldi L, De Santis P, Meiswinkel R, Caporale V: **Bluetongue virus isolations from midges belonging to the Obsoletus complex (Culicoides, Diptera: Ceratopogonidae) in Italy.** *Vet Rec* 2005, **157**:133–139.
106. Meiswinkel R, Baldet T, De Deken R, Takken W, Delecalle JC, Mellor PS: **The 2006 outbreak of bluetongue in northern Europe—the entomological perspective.** *Prev Vet Med* 2008, **87**:55–63.
107. Vanbinst T, Vandenbussche F, Vandemeulebroucke E, De Leeuw I, Deblauwe I, De Deken G, Madder M, Haubruge E, Lossos B, De Clercq K: **Bluetongue virus detection by real-time RT-PCR in Culicoides captured during the 2006 epizootic in Belgium and development of an internal control.** *Transbound Emerg Dis* 2009, **56**:170–177.
108. De Liberato C, Scavia G, Lorenzetti R, Scaramozzino P, Amaddeo D, Cardeti G, Scicluna M, Ferrari G, Autorino GL: **Identification of Culicoides obsoletus (Diptera: Ceratopogonidae) as a vector of bluetongue virus in central Italy.** *Vet Rec* 2005, **156**:301–304.
109. Lossos B, Mignon B, Paternostre J, Madder M, De Deken R, De Deken G, Deblauwe I, Fassotte C, Cors R, Defrance T, Delécolle JC, Baldet T, Haubruge E, Frédéric F, Bortels J, Simonon G: **Biting midges overwintering in Belgium.** *Vet Rec* 2007, **160**:451–452.
110. Zimmer JY, Saegerman C, Lossos B, Haubruge E: **Breeding sites of bluetongue virus vectors, Belgium.** *Emerg Infect Dis* 2010, **16**:575–576.
111. Calisher CH: **History, classification, and taxonomy of viruses in the family Bunyaviridae.** Edited by Elliott RM. New York: Plenum Press; 1996:1–17.
112. Yanase T, Maeda K, Kato T, Nyuta S, Kamata H, Yamakawa M, Tsuda T: **The resurgence of Shamonda virus, an African Simbu group virus of the genus Orthobunyavirus, in Japan.** *Arch Virol* 2005, **150**:361–369.
113. Yanase T, Aizawa M, Kato T, Yamakawa M, Shirafuji H, Tsuda T: **Genetic characterization of Aino and Peaton virus field isolates reveals a genetic reassortment between these viruses in nature.** *Virus Res* 2010, **153**:1–7.
114. Yanase T, Yoshida K, Ohashi S, Kato T, Tsuda T: **Sequence analysis of the medium RNA segment of three Simbu serogroup viruses, Akabane, Aino, and Peaton viruses.** *Virus Res* 2003, **93**:63–69.
115. Jost H, Bialonski A, Schmetz C, Gunther S, Becker N, Schmidt-Chanasit J: **Isolation and phylogenetic analysis of Batai virus, Germany.** *Am J Trop Med Hyg* 2011, **84**:241–243.
116. Bilk S, Schulze C, Fischer M, Beer M, Hlinak A, Hoffmann B: **Organ distribution of Schmallenberg virus RNA in malformed newborns.** *Vet Microbiol* 2012, **159**:236–238.
117. De Regge N, Van Loo H, Bertels G, Saulmont M, Vandenbusse F, Van den Berg T, Cay AB: **Comparative analysis to determine the most appropriate tissue for Schmallenberg virus detection by RT-PCR in aborted lambs and calves.** In *Proceedings of the EPIZONE 6th Annual Meeting: June 2012. Brighton.* ; 2012:13.
118. De Regge N, van den Berg T, Georges L, Cay B: **Diagnosis of Schmallenberg virus infection in malformed lambs and calves and first indications for virus clearance in the fetus.** *Vet Microbiol* 2012, **162**:595–600.
119. Loeffen W, Quak S, De Boer-Luijze E, Hulst M, Van Der Poel W, Bouwstra R, Maas R: **Development of a virus neutralisation test to detect antibodies against Schmallenberg virus and serological results in suspect and infected herds.** *Acta Vet Scand* 2012, **54**:44.
120. Mansfield KL, Rocca SA, Khatri M, Johnson N, Steinbach F, Fooks AR: **Detection of Schmallenberg virus serum neutralising antibodies.** *J Virol Methods* 2013, **188**:139–144.
121. Bréard E, Lara E, Comtet L, Viarouge C, Doceul V, Desprat A, Vitour D, Pozzi N, Cay AB, De Regge N, Pourquier P, Schirmeier H, Hoffmann B, Beer M, Sailleau C, Zientara S: **Validation of a commercially available indirect ELISA using a nucleocapsid recombinant protein for detection of Schmallenberg virus antibodies.** *PLoS One* 2013, **8**:e53446.
122. Van Maanen C, van der Heijden H, Wellenberg GJ, Witteveen G, Lutikholt S, Bouwstra R, Kooi B, Vellema P, Peperkamp K, Mars J: **Schmallenberg virus antibodies in bovine and ovine fetuses.** *Vet Rec* 2012, **171**:299.
123. Humphries D, Burr P: **Schmallenberg virus milk antibody ELISA.** *Vet Rec* 2012, **171**:511–512.
124. ProMed-mail: **SCHMALLEMBERG VIRUS - EUROPE (56). NETHERLANDS: BULK MILK SURVEY.** <http://www.promedmail.org/direct.php?id=20120828.1268617>.
125. Miura Y, Hayashi S, Ishihara T, Inaba Y, Omori T: **Neutralizing antibody against Akabane virus in precolostral sera from calves with congenital arthrogryposis-hydranencephaly syndrome.** *Arch Gesamte Virusforsch* 1974, **46**:377–380.
126. Toussaint JF, Sailleau C, Breard E, Zientara S, De Clercq K: **Bluetongue virus detection by two real-time RT-qPCRs targeting two different genomic segments.** *J Virol Methods* 2007, **140**:115–123.
127. Ministère de l'Agriculture, de l'Agroalimentaire et de la Forêt: **Schmallenberg virus - Situation épidémiologique en France, Note d'information N°24; 2012.** http://img.cantal.fr/pdf/20120502160604_58.pdf?r=2223.
128. Plateforme Nationale de Surveillance Épidémiologique en Santé Animale: **Surveillance SBV congénital – Saison 2012/2013.** http://www.plateforme-esas.fr/images/documents/surveillance%20sbv%20congnital_document%20technique.pdf.
129. Elbers AR, Loeffen WL, Quak S, De Boer-Luijze E, van der Spek AN, Bouwstra R, Maas R, Spierenburg MA, De Kluijver EP, Van Schaik G, van der Poel WH: **Seroprevalence of Schmallenberg virus antibodies among dairy cattle, the Netherlands, winter 2011–2012.** *Emerg Infect Dis* 2012, **18**:1065–1071.
130. Meroc E, Poskin A, Van Loo H, Quinet C, Van Driessche E, Delooz L, Behaeghel I, Riocreux F, Hooyberghs J, De Regge N, Caij AB, van den Berg T, van der Stede Y: **Large-scale cross-sectional serological survey of Schmallenberg virus in Belgian cattle at the end of the first vector season.** *Transbound Emerg Dis* 2013, **60**:4–8.
131. Meroc E, De Regge N, Riocreux F, Caij AB, van den Berg T, van der Stede Y, De Regge N, Riocreux F, Caij AB: **Distribution of Schmallenberg virus and seroprevalence in Belgian sheep and goats.** *Transbound Emerg Dis.* in press.
132. European Food Safety Authority: **“Schmallenberg” virus: analysis of the epidemiological data and impact assessment.** *EFSA J* 2012, **10**:2768. 89 pp.
133. ProMed-mail: **SCHMALLEMBERG VIRUS - EUROPE (44). GERMANY UPDATE, OIE, RESOLVED.** <http://www.promedmail.org/direct.php?id=20120602.1154134>.
134. Martinelle L, Dal Pozzo F, Gauthier B, Kirschvink N, Saegerman C: **Field veterinary survey on clinical and economic impact of Schmallenberg virus in Belgium.** *Transbound Emerg Dis.* in press.
135. Saegerman C, Martinelle L, Dal Pozzo F, Kirschvink N: **Preliminary survey on the impact of Schmallenberg virus on sheep flocks in South of Belgium.** *Transbound Emerg Dis.* in press.
136. Dominguez M, Hendrikx P, Zientara S, Calavas D, Jay M, Touratier A, Languille J, Fediaevsky A: **Preliminary estimate of Schmallenberg virus infection impact in sheep flocks - France.** *Vet Rec* 2012, **171**:426.
137. European Commission: **Statement on the Schmallenberg Virus Situation issued by the European Commission together with the EU Member States following the working group;** 2012. http://ec.europa.eu/food/animal/diseases/schmallenberg_virus/docs/statement_schmallenberg_17022012_en.pdf.
138. ProMed-mail: **SCHMALLEMBERG VIRUS - EUROPE (07). (GERMANY) VIRUS RNA IN BOVINE SEMEN.** <http://www.promedmail.org/direct.php?id=20130123.1511878>.
139. ProMed-mail: **SCHMALLEMBERG VIRUS - EUROPE (77). (NETHERLANDS, FRANCE) VIRUS RNA IN BOVINE SEMEN.** <http://www.promedmail.org/direct.php?id=20121221.1462748>.
140. ProMed-mail: **SCHMALLEMBERG VIRUS - EUROPE (76). VIRUS RNA IN BOVINE SEMEN.** <http://www.promedmail.org/direct.php?id=20121220.1460864>.
141. Parsonson IM, Della-Porta AJ, Snowdon WA, O'Halloran ML: **Experimental infection of bulls with Akabane virus.** *Res Vet Sci* 1981, **31**:157–160.
142. Tarlinton R, Daly J, Dunham S, Kydd J: **The challenge of Schmallenberg virus emergence in Europe.** *Vet J* 2012, **194**:10–18.
143. **Vet Rec Schmallenberg virus: AHVLA predicts similar losses in 2013.** 2013, **172**:3.
144. Kurogi H, Inaba Y, Takahashi E, Sato K, Akashi H, Satoda K, Omori T: **An attenuated strain of Akabane virus: a candidate for live virus vaccine.** *Natl Inst Anim Health Q* 1979, **19**:12–22.
145. Kim YH, Kweon CH, Tark DS, Lim SI, Yang DK, Hyun BH, Song JY, Hur W, Park SC: **Development of inactivated trivalent vaccine for the teratogenic Aino, Akabane and Chuzan viruses.** *Biologicals* 2011, **39**:152–157.

doi:10.1186/1297-9716-44-31

Cite this article as: Doceul et al.: Epidemiology, molecular virology and diagnostics of Schmallenberg virus, an emerging orthobunyavirus in Europe. *Veterinary Research* 2013 **44**:31.